



Review Article



Exploring the Safety, Efficacy, and Bioactivity of Herbal Medicines: Bridging Traditional Wisdom and Modern Science in Healthcare

Acharya Balkrishna^{1,2}, Nidhi Sharma^{1*} , Deepika Srivastava¹, Ankita Kukreti¹, Stuti Srivastava¹ and Vedpriya Arya^{1,2}

¹Patanjali Herbal Research Department, Patanjali Research Foundation, Haridwar, India; ²Department of Allied Sciences, University of Patanjali, Haridwar, India

Received: September 26, 2023 | Revised: December 11, 2023 | Accepted: January 02, 2024 | Published online: March 28, 2024

Abstract

This review explores the convergence of traditional wisdom and modern science in the realm of herbal medicines, focusing on the safety, efficacy, and bioactivity of these natural remedies in contemporary healthcare. The rich history of herbal medicines, deeply embedded in cultural traditions, is witnessing a resurgence as the quest for holistic and personalized healthcare gains momentum. Herbal medicine, a time-honored practice passed down through generations, is experiencing renewed interest amid the growing acknowledgment of its potential benefits. This review delves into the safety profiles of herbal remedies, subjecting them to rigorous scientific scrutiny. Additionally, it investigates the efficacy of herbal interventions, aiming to bridge the gap between historical anecdotes and empirical research. The complex bioactivity of herbal compounds, often containing numerous active ingredients, is a focal point, unraveling the mechanisms through which these natural substances interact with the human body. In a world where the synthesis of traditional wisdom and modern science holds promise for advancing healthcare, this review contributes to the ongoing dialogue. By critically examining the safety, efficacy, and bioactivity of herbal remedies, it aims to illuminate the evolving landscape of herbal medicine. The goal is to integrate the best of both worlds to enhance global well-being, acknowledging the potential of herbal medicine as a valuable complement to modern healthcare practices.

Introduction

Herbal medicine, also known as herbalism or phytotherapy, involves employing plant-based substances for therapeutic purposes.

Keywords: Herbal medicine; Safety; Efficacy; Bioactivity; Natural remedies; Traditional medicine; Botanical supplements.

Abbreviations: ACE, angiotensin-converting enzyme; Akt, protein kinase B; BP, blood pressure; CNS, central nervous system; CYP, cytochrome P450; ED₅₀, effective dose for 50% of the population; ERK, extracellular-signal regulated kinase; FAERS, FDA's Adverse Event Reporting System; FDA, The Food and Drug Administration; GACP, Guidelines on Good Agricultural and Collection Practices; HDIs, herb-drug interactions; IL, interleukin; JNK, c-Jun N-terminal kinase; MMP, matrix metalloproteinase; NFκB, nuclear factor kappa B; PI3K, phosphoinositide 3-kinase; ROS, reactive oxygen species; TCM, traditional Chinese medicine; TD₅₀, median toxic dose of a drug at which toxicity occurs in 50% of cases.

***Correspondence to:** Nidhi Sharma, Patanjali Herbal Research Department, Patanjali Research Foundation, Maharishi Dayanand Gram, Delhi-Haridwar National Highway, Near Bahadrapur, Haridwar 249405, India. ORCID: <https://orcid.org/0000-0001-6123-5194>. Tel: +91-9999880322, E-mail: nidhi.sharma@prft.co.in

How to cite this article: Balkrishna A, Sharma N, Srivastava D, Kukreti A, Srivastava S, Arya V. Exploring the Safety, Efficacy, and Bioactivity of Herbal Medicines: Bridging Traditional Wisdom and Modern Science in Healthcare. *Future Integr Med* 2024;3(1):35–49. doi: 10.14218/FIM.2023.00086.

This practice dates back to ancient civilizations, where plants were revered for their healing properties. Traditional medical systems like Ayurveda, Traditional Chinese Medicine (TCM), and Native American remedies all bear witness to the historical significance of herbal medicine.

Herbal medicine has perpetually represented a crucial element of primary healthcare. Approximately 80% of the global population is estimated to use herbal medicinal products for their therapeutic benefits.^{1–3} As of 2022, the global Herbal Medicine Market Size was assessed at USD 148.5 billion, and it is anticipated to ascend from USD 165.13 billion in 2023 to reach USD 386.07 billion by 2032. This trajectory indicates a compound annual growth rate of 11.20% throughout the forecasted period from 2023 to 2032. The global COVID-19 pandemic has unfolded in an unparalleled and remarkable manner, resulting in a heightened demand for herbal medicine in all geographical regions, surpassing pre-pandemic levels. The demand for herbal medicinal goods has grown as people have become more aware of allopathic medications' side effects and the advantages of using herbal medicines instead. The expanding population, coupled with an increase in the prevalence of chronic diseases, is another market driver impacting market

growth.^{4,5}

However, this increasing demand has also witnessed a rise in fraudulent practices, including the substitution of herbal material and the addition of synthetic compounds.^{3,6} Consequently, standardization and quality control processes have become paramount. Additionally, some adverse effects are not solely attributable to adulteration, contamination, or misidentification of plant species; they can also stem from the intrinsic toxicity of certain plants. This necessitates a thorough toxicological assessment to mitigate potential safety concerns. Furthermore, adverse effects can also be triggered by foreign contaminants such as chemicals like pesticide residues or heavy metals, or microbiological agents.⁷ These factors underscore the necessity for rigorous safety protocols.

While the historical use of herbal medicines underscores its potential, the contemporary scientific community acknowledges the imperative for rigorous safety and efficacy evaluations. Unlike pharmaceutical drugs, herbal products often lack standardized dosages and can interact with other medications.⁸ Instances of adverse events linked to certain herbal preparations underscore the need for thorough clinical trials and toxicological assessments. Regulatory agencies are increasingly prioritizing the quality, safety, and efficacy of herbal products to safeguard public health. Scientific advancements over time led to the isolation and synthesis of active compounds from plants, forming the foundation of modern pharmaceuticals. However, the holistic approach inherent in herbal medicine, often utilizing multiple plant constituents, continues to retain its significance. The industry of phyto-preparations has witnessed substantial growth over recent decades, resulting in a diverse array of products available in the market, which are utilized in alternative and complementary medicine contexts. Amidst heightened consumer demand, there is mounting pressure to assess product efficacy and to ensure their safety.

One of the intriguing facets of herbal medicine lies in its diverse array of bioactive compounds that contribute to its therapeutic effects. Compounds like alkaloids, flavonoids, and terpenes interact with biological systems, eliciting responses that can address various health conditions.^{9–11} Gaining a comprehensive understanding of the mechanisms through which these compounds operate is pivotal for optimizing formulations and developing targeted treatments. Advances in analytical techniques, genomics, and metabolomics have played a pivotal role in identifying and characterizing these bioactive components.^{12,13}

This review article delves into crucial aspects of regulation and quality control in herbal medicine production, highlighting the potential for toxicity and side effects in natural remedies, the efficiency and bioactivity of herbal products, and the significance of understanding interactions between drugs and herbs. With the growing popularity of herbal medicine, adopting informed and evidence-based approaches becomes paramount for ensuring both safety and efficacy in healthcare practices.

Data acquisition was executed through the utilization of globally recognized databases, namely, PubMed, Web of Science, Google Scholar, and Science Direct. The corpus of scrutinized literature encompassed primary research articles, comprehensive review articles, and books.

Safety assessment of herbal medicines

Herbal drugs and their preparations

Traditional medicinal herbal drugs encompass various plant parts such as aerial parts, flowers, fruits, leaves, seeds, stems, and subterranean components like roots, bulbs, tubers, and rhizomes.^{14,15}

These materials exist in diverse forms, including raw, fresh, dried, and extracts, with occasional use of entire dried plants (Fig. 1).^{16–18} They hold significant global importance in international trade, featuring noteworthy clinical, economic, health, and pharmaceutical value. The escalating recognition of their worth, whether justified or not, is contributing to a steady expansion of their market. However, comprehensive data concerning the quality, safety, and efficacy of numerous plants, their extracts, preparations, and active compounds remain limited.¹⁶ Ensuring their quality is of paramount importance to guarantee their safety and effectiveness.^{15,19}

Safety and potential toxicity of herbal remedies

The notion of “toxicity” is inherently influenced by individual perspectives. Numerous everyday foods contain components that could trigger allergies or might be classified as toxic based on specific criteria. For instance, alpha-gliadin in gluten from wheat, oats, and rye; cyanogenic glycosides in various fruit seeds; thiocyanates in Brassica vegetables; alkaloids in Solanaceae plants; and lectins in select legumes such as soy and red kidney beans are constituents present in foods generally regarded as safe worldwide.²⁰

In a similar vein, even life-sustaining substances such as water and oxygen can become lethal when consumed in excessive quantities, underscoring the significance of dosage as a pivotal factor.^{21,22} Nonetheless, from a safety standpoint, it is feasible to categorize herbs into three distinct groups. The first group comprises a few herbs that contain high levels of potentially harmful substances, akin to pharmaceutical compounds. These should never be ingested by untrained individuals, except in homeopathic preparations. Examples include *Atropa belladonna*, *Arnica* spp., *Aconitum* spp., and *Digitalis* spp. The second group includes herbs with potent effects that may sometimes lead to symptoms like nausea or vomiting. However, these herbs are safe when used appropriately. Examples include *Lobelia* and *Eonymus* spp. Interestingly, there are contradictions in the regulations of these herbs across different countries; for instance, *Ephedra* is restricted in the UK but readily available in the USA, possibly with valid reasons.^{23–25} The third group consists of herbs that exhibit specific types of toxicity, supported by scientific evidence. Notably, plants containing pyrrolizidine alkaloids, such as Comfrey (*Symphytum*), are well known for their hepatotoxicity. Other examples include *Dryopteris* (Male Fern), *Viscum* (Mistletoe), and *Corynanthe* (Yohimbe). It is advisable for laypeople to avoid internal consumption of herbs from this group.^{3,20,26}

In summary, the classification of a substance as toxic hinges on various factors; in the realm of herbal medicine, different herbs exhibit varying degrees of toxicity and potential risks. It is crucial to exercise caution, adhere to appropriate usage guidelines, and seek professional advice when considering the ingestion of herbs, particularly those in the first and third groups, to ensure safety and minimize potential harm. The introduction and widespread availability of herbal medicines and their derivatives in many countries often occur without mandatory safety or toxicological assessments, and regulatory oversight of manufacturing practices and quality standards is often lacking. Consequently, these herbal products are easily accessible to consumers without requiring prescriptions. Unfortunately, the underestimated potential hazards associated with substandard herbal products pose significant risks.^{24,26–29} There has been a growing global interest in and usage of herbal medicines, exemplified by substantial consumption rates in Asian countries, with India at 65% and China at 40%. Likewise, Belgium, France, and Canada report usage percentages of

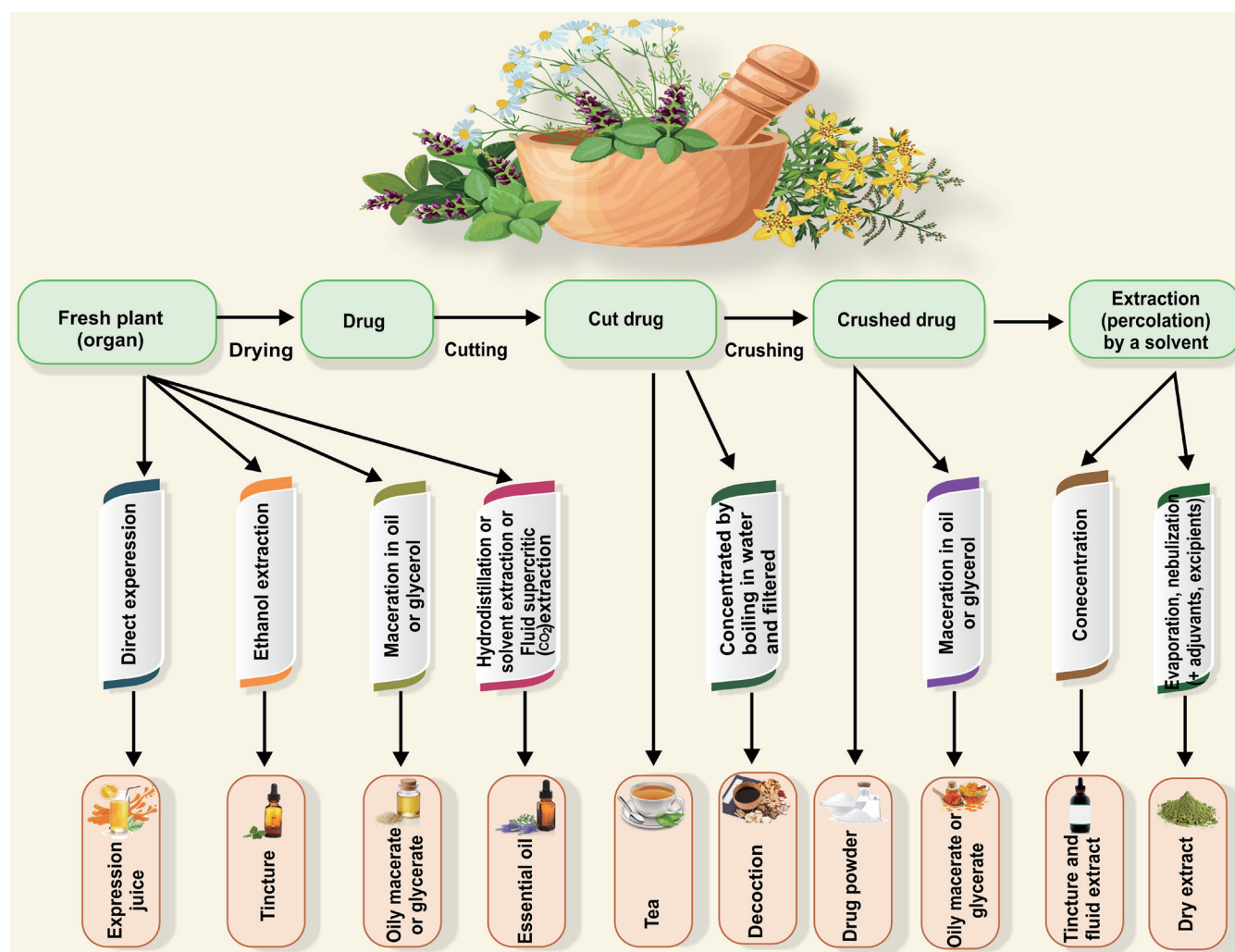


Fig. 1. The major types of herbal preparations.

31%, 49%, and 70%, respectively.^{30–32} Although patients hold positive perceptions of herbal medicines, express satisfaction with their therapeutic outcomes, and often harbor dissatisfaction with the efficacy and safety of conventional allopathic medications, apprehensions about the safety of herbal remedies endure. Table 1 illustrates contrasting adverse reactions between pharmaceuticals and herbal medications. Herbal therapy is characterized by a holistic approach, encompassing emotional, mental, and spiritual aspects, with lifestyle considerations being integral to naturopathic practices. Generally, herbal treatments do not entail typical drug actions or adverse effects, but informed knowledge of medicinal plant effects and clinical trials for appropriate medical applications are essential. It has been recommended that we use the terms indications and contraindications instead of side effects when discussing herb consumption.^{24,33–35}

Anticipating adverse effects and toxicities: understanding herbal medicine usage

In the realm of herbal medicine and dietary supplements, the occurrence of adverse effects and toxicities often stems from improper usage. These incidents can be attributed to several factors,

including the inappropriate application of herbs and supplements, their incorrect preparation, excessive dosages, or prolonged utilization.^{26,36} Consequently, it is crucial for physicians to remain vigilant when patients report a history of such usage, as it may indicate the potential for toxicities. For instance, an excess intake of vitamin D, often driven by overly enthusiastic fortification in milk, has been linked to hypercalcemia. Similarly, the prolonged and excessive consumption of vitamin A can result in adverse outcomes like osteoporosis and hepatotoxicity.^{37–39}

It is important to understand that herbal medicines primarily focus on maintaining the body's balance rather than providing immediate symptom relief. Therefore, when products claim to offer rapid symptom relief, it should raise concerns among healthcare professionals, as this could indicate intentional adulteration with pharmaceutical substances. Such adulterated products are usually available in the form of ingestible or occasionally topical finished products.

Research has revealed instances of adulteration in herbal medicines. For example, a survey conducted in Taiwan analyzed 2,609 herbal samples and found that 23.7% of them were adulterated

Table 1. Contrasting adverse reactions between pharmaceuticals and herbal medications

	Pharmaceutical drugs	Herbal drugs
Reporting System	A robust system exists for reporting and tracking adverse reactions to pharmaceutical drugs. Healthcare providers and pharmaceutical companies must report such events, resulting in comprehensive databases of drug-related adverse events.	Adverse reactions linked to herbal drugs are less systematically reported compared to pharmaceuticals, often leading to underreporting due to a lack of awareness among consumers and healthcare providers.
Data on adverse reactions	In 2020, the FDA's Adverse Event Reporting System (FAERS) recorded 5.8 million adverse event reports associated with pharmaceutical drugs, encompassing a spectrum from mild side effects to severe and life-threatening reactions.	Monitoring herbal drug adverse reactions is less robust than for pharmaceuticals. Despite potential underreporting, the documented instances of serious or life-threatening adverse reactions to herbal medicines remain exceptionally rare.
Common adverse reactions	Common adverse reactions to pharmaceutical drugs include nausea, vomiting, headache, dizziness, and skin rashes. In severe cases, they can cause organ damage or even death	The lack of comprehensive reporting systems makes it challenging to compile accurate data on adverse reactions to herbal drugs.

FDA, The Food and Drug Administration.

with pharmaceuticals. Similarly, a study examining 243 proprietary products in California showed that 7% contained undisclosed pharmaceutical ingredients. In Singapore, screening of 3,320 TCM herbal products in 1999 revealed that 1.2% of them contained undisclosed pharmaceuticals. Typically, only one adulterant is detected, although there are cases of multiple adulterations. Another form of adulteration involves substituting a cheaper or more readily available herb for another, even if it has a less favorable safety profile.^{39–42}

Among the most common adulterants are pharmaceuticals intended to alleviate discomforting symptoms, including nonsteroidal anti-inflammatory drugs and antihistamines. Adulteration is a pervasive issue in the realm of steroids and sexual-enhancing drugs, with Sildenafil being a commonly reported culprit.^{42–45} The consequences of such adulterations can be dire, as the added drugs often carry significant risks of toxicity. For instance, substances like sulfonylurea, phenylbutazone, phenytoin, and corticosteroids can lead to severe and potentially life-threatening adverse effects.⁴¹ Issues originating from these adulterated items include allergic responses, Addisonian crisis, and Cushing's syndrome, all stemming from unintentional ingestion of products containing added steroids.⁴⁶ Moreover, individuals employing nitrates for cardiac ischemia may experience hypotension when unknowingly using items contaminated with Sildenafil. Furthermore, unsuspecting utilization of products containing sulfonylurea can lead to severe or fatal hypoglycemia.^{39,47,48}

Apart from this, other quality challenges prevalent in the herbal medicinal products market primarily stem from species substitution and adulteration.²⁸ Such contaminations and substitutions can result in adverse reactions in consumers. For instance, the presence of *Senna alexandrina* in *Hypericum perforatum* products led to unintended ingestion of sennosides, causing a laxative effect.⁴⁹ The discovery of *Juglans nigra* in *Ginkgo* and *Echinacea* products raised concerns due to the toxic compound juglone. In addition, substituting *Stephania tetrandra* with *Aristolochia fangchi* in TCM products may lead to renal toxicity and cancer due to the presence of aristolochic acid. Adulterating *Datura stramonium* with *Brugmansia arborea* in Ayurvedic medicine also poses serious risks.^{28,50,51}

In light of the aforementioned challenges, the accurate identification of medicinal plant materials is imperative to ensure their safety. Additionally, many manufacturers of herbal medicines lack knowledge or place insufficient emphasis on the significance of taxonomic botany and documentation, which presents unique

challenges during the identification and collection of medicinal plants used in herbal remedies. To address confusion stemming from common names, it is essential to adopt widely accepted binomial names, including their synonyms, for medicinal plants. For instance, *Artemisia absinthium* L., known for its active narcotic derivative and potential to induce central nervous system disorders and generalized mental deterioration, has no fewer than 11 distinct common names, with seven bearing no resemblance to its botanical name. Given the prevalence of common names, *Heliotropium europaeum* (heliotrope), containing potent hepatotoxic pyrrolidine alkaloids, is frequently mistaken for *Valerian officinalis* (garden heliotrope), which contains sedative and muscle relaxant valepotriates, emphasizing the necessity of providing the precise scientific name of the plant. Hence, the proficient oversight of herbal medicine safety necessitates robust cooperation among botanists, phytochemists, pharmacologists, and other prominent contributors.²⁶

To safeguard consumers, the authentication of both the initial herbal constituents and the ultimate commercialized items remains imperative. While traditional methods, including morphological, microscopic, and chemical identification, have traditionally served as authentication tools, novel approaches have emerged and garnered prominence over the past ten years. These innovations provide fresh avenues for guaranteeing the safety and genuineness of herbal remedies.⁵²

Regulation and quality control

Organizations such as the World Health Organization play a pivotal role in establishing guidelines and standards for the production of herbal medicines. For example, "Guidelines for Assessing Quality of Herbal Medicines with Reference to Contaminants and Residues" and "Guidelines on Good Agricultural and Collection Practices (GACP) for Medicinal Plants" offer essential insights into quality control and cultivation practices, ensuring the global adherence to safety and efficacy standards.^{52,53} Unlike pharmaceutical drugs that undergo rigorous premarket testing, herbal products exhibit variable standardization and quality due to disparities in cultivation, harvesting, processing, and storage. Regulatory measures are essential to address these challenges and safeguard consumer health. The variability in phytochemical constituents is influenced by factors such as climate, soil composition, and geographical location, contributing to challenges in standardization. Rising issues like adulteration and substitution of herbal drugs, often linked to increased deforestation, also compromise the safety

and efficacy of these products. Key challenges in obtaining genuine herbal drugs include adulteration, substitution, and a shortage of skilled personnel. Implementing advanced quality control techniques and standards is crucial to ensure the quality of medicinal herbal products.^{54,55}

The World Health Organization has established guidelines for herbal drug standardization, incorporating critical evaluation parameters such as organoleptic properties, ash values, moisture content, microbial contamination, and chromatographic and spectroscopic assessments.^{56–58} Modern analytical techniques are indispensable for the global acceptance of traditional herbs and Ayurvedic products. A comprehensive and precise pharmacognostical assessment forms a scientific foundation for evaluating the quality of traditional herbs and Ayurvedic products. Organoleptic tests, physicochemical studies, and pharmacognostic schemes are paramount for authentication and standardization. Microscopic and macroscopic studies provide data to prevent the adulteration of authentic herbal materials and assist in their identification. Furthermore, the identification of secondary metabolites like alkaloids, tannins, glycosides, saponins, and flavonoids serves as a valuable tool for standardization.^{59–62}

Current quality evaluation of herbal medicines often relies on one or two markers or pharmacologically active components. However, these may not provide a comprehensive understanding of a product's therapeutic effects, as multiple constituents often work synergistically. Variability in chemical composition due to factors like harvest season, plant origin, and drying processes further complicates assessment. To ensure pharmacological and clinical research reliability and product quality, it is suggested that a broader range of phytochemical constituents should be determined, requiring chromatographic techniques like high-performance liquid chromatography, gas chromatography, capillary electrophoresis, and thin-layer chromatography analysis. Chromatographic fingerprints, representing common chemical components, can serve as a holistic quality assessment tool for herbal medicines. These fingerprints should demonstrate both the uniformity and differences in different samples. Hyphenated chromatography-spectrometry approaches, such as high-performance liquid chromatography–diode-array detection, gas chromatography–mass spectrometry, and capillary electrophoresis–diode-array detection, along with chemometric techniques, offer enhanced separation, selectivity, and precision for qualitative and structural analysis. Such chromatographic fingerprints, regarded as dimensionally advantageous, are pivotal for quality control.^{3,54,55}

The absence of robust regulation can result in various issues within the herbal products industry, including adulteration, contamination, and inconsistencies in potency. Regulatory frameworks play a vital role in establishing guidelines for good manufacturing practices, ensuring that herbal medicines adhere to specific quality standards and promoting accurate labeling for informed consumer choices. However, regulatory standards for herbal medicines vary widely between countries, with some implementing stringent regulations while others adopt more lenient approaches. This divergence can result in disparities in product quality and safety, where herbal remedies from different countries may not conform to the same quality standards. Harmonizing global regulatory standards remains an ongoing challenge, necessitating collaboration among international organizations, regulatory bodies, and governments. To enhance the authentication of herbal products, future studies should align with established formulation processes, incorporating microscopic and macroscopic analyses, substance identification (for both adulterants and authentic components), physicochemi-

cal parameter assessments (e.g., moisture content, acid-insoluble ash, and water-soluble ash), and the incorporation of novel parameters.^{63–65}

Drug-herb interactions

The interactions between herbal remedies and conventional medications can have significant implications for patient safety and treatment outcomes. Certain herbs can alter the pharmacokinetics and pharmacodynamics of prescription drugs, potentially reducing their efficacy or causing adverse effects.

The use of herbal remedies is widespread. The growing global use of herbal medicinal products raises public health concerns about their safety and efficacy. Estimating risks is challenging due to misconceptions, lack of communication, low-grade products, and counterfeit supplies. Ensuring herbal medicine safety is crucial. The pharmacological or toxicological effects of either substance may be increased or decreased as a result of interactions between herbs and medications. The long-term administration of drugs may become more difficult due to synergistic therapeutic effects. Less than 40% of patients notify their doctors that they use herbal supplements, and many medical professionals are oblivious to the potential harmful effects of herb-drug combinations.⁶⁶ Negative side effects and interactions have not been reported, which is probably a result of both underreporting and the largely innocuous nature of the plants used. A study of 1,000 elderly patients found that 538 were exposed to 1,087 interactions, with 30 experiencing adverse effects.⁶⁷

The common specificity of substrates in biotransformational paths is the primary cause of drug-drug, food-drug, and herb-drug interactions (HDIs). Pharmacodynamic drug interactions involve chemical moieties interacting with receptor sites and altering the physiological environment, while pharmacokinetic interactions arise from altered absorption, distribution interference, and metabolic and excretory pathway changes (Fig. 2). Pharmacokinetic HDIs involve the induction or inhibition of metabolic enzymes, particularly the cytochrome P450 (CYP) enzyme family, in the intestines and liver, and similar effects on drug transporters and efflux proteins.^{68–71} CYP and efflux proteins' presystemic activity can affect oral bioavailability, causing co-administered herbal products to significantly reduce or increase drug levels.⁷²

Pharmacokinetic and pharmacodynamic HDIs are mechanisms that alter gastrointestinal functions, drug absorption, metabolic enzymes, transport proteins, and renal excretion of drugs. HDIs often involve CYP oxidative metabolism or P-glycoprotein efflux, affecting the oral bioavailability of medications when combined with soluble and insoluble fibers like psyllium, tea, pomegranate, cinnamon, and rhubarb. Grapefruit also has been found to significantly increase the serum drug concentration due to its irreversible inhibition of CYP3A4 activity.^{67,71,72}

The combination of herbs and drugs can result in various adverse effects, including the following: an increased risk of bleeding with warfarin when used alongside ginkgo, garlic, dong quai, or danshen; the potential for mild serotonin syndrome when serotonin-reuptake inhibitors are mixed with St. John's wort; decreased bioavailability of medications like digoxin, theophylline, cyclosporine, and phenprocoumon when taken concurrently with St. John's wort; the risk of inducing mania in depressed patients by combining antidepressants with *Panax ginseng*; exacerbation of extrapyramidal effects when neuroleptic drugs are paired with betel nut; an elevated hypertension risk when tricyclic antidepressants are combined with Yohimbine; increased corticosteroid po-

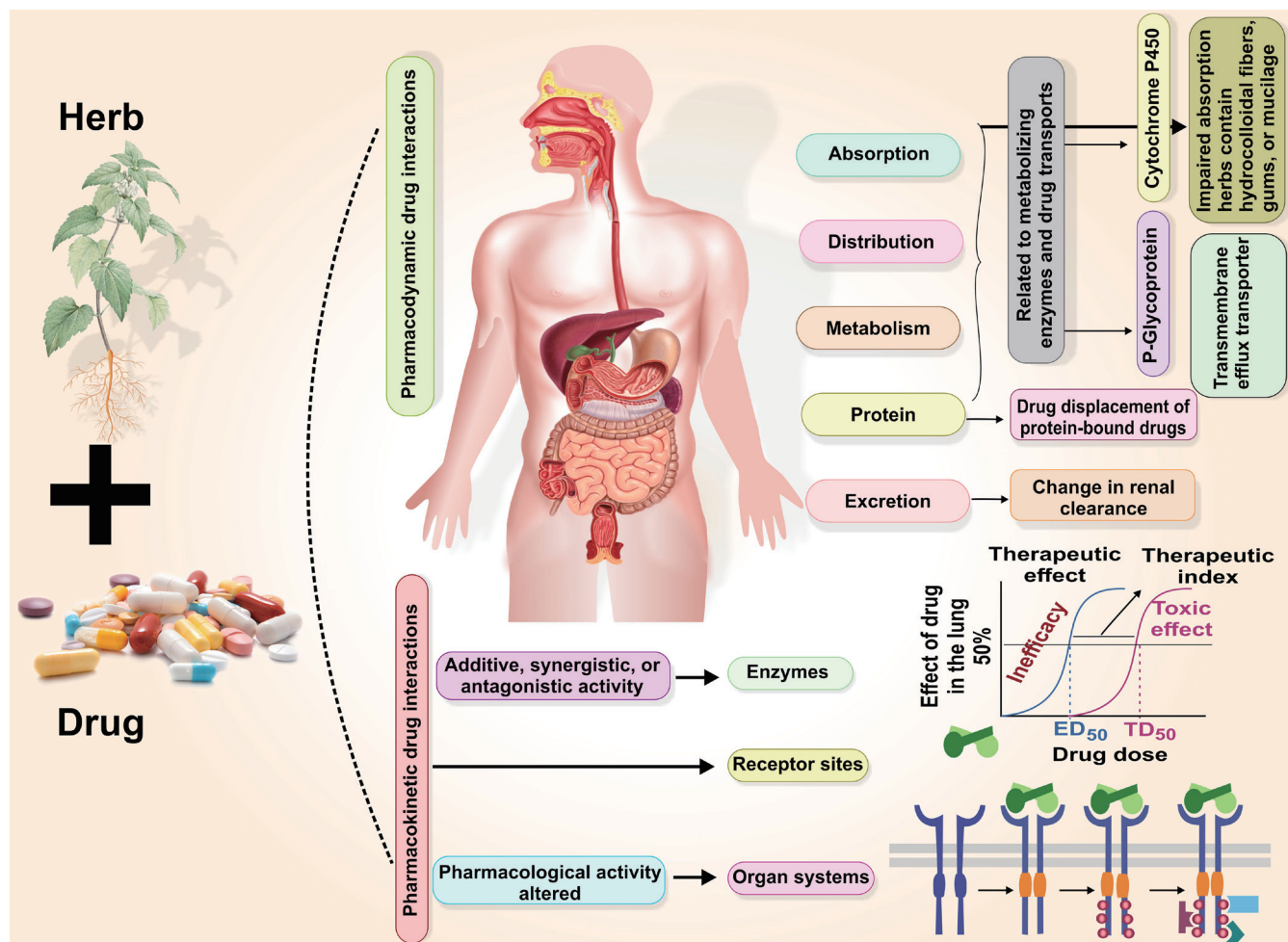


Fig. 2. Pharmacokinetic and pharmacodynamic mechanistic insights of herb-drug interactions. ED₅₀, effective dose for 50% of the population; TD₅₀, median toxic dose of a drug at which toxicity occurs in 50% of cases.

tency with licorice; decreased prednisolone blood concentrations when paired with Chinese herbal products; and reduced phenytoin concentrations when taken alongside shankhapushpi, an Ayurvedic formulation.^{67,73–77}

Ginkgo biloba and garlic have been found to induce CYP2C19-dependent omeprazole metabolism in healthy humans and animal models.^{78,79} In addition, grapefruit juice's flavonoid content has been found to inhibit CYP, leading to further research in medicinal herbs.^{80,81} Rotenone, a naturally occurring phytochemical found in plants like the jicama vine, also inhibits CYP activity by interfering with the electron transfer of heme iron.^{82,83}

Herbal extracts have shown potential in reducing various enzymes and promoting HDIs. Curcumin, an herbal antioxidant with anti-inflammatory and antitumor properties, has been shown to increase glutathione S-transferase and quinone reductase activity in the livers of ddY mice. Moreover, valerian, an herbal supplement for treating insomnia, has demonstrated the possibility of inducing HDIs through the inhibition of uridine 5'-diphospho-glucuronosyl-transferase activity. To further comprehend the mechanisms and therapeutic uses of these herbal treatments, more research is required.⁷¹

Anthranoic-containing plants (e.g., cassia, cascara, and rhubarb) and soluble fibers can decrease drug absorption by increas-

ing the gastrointestinal transit time and increasing gastrointestinal motility. These plants might be detrimental to the gut epithelium (inhibits Na⁺/K⁺ Adenosine triphosphatase) and increase nitric oxide synthase activity, leading to increased intestinal transit and fluid accumulation. Garlic-derived compounds have been found to enhance the activity of quinone reductase and glutathione transferase in the rat gastrointestinal tract; therefore, these compounds are considered chemoprotective against chemical carcinogens. Ginseng's pharmacokinetic HDIs may be influenced by its gastrointestinal effects, specifically its inhibitory effects on gastric secretion. *In vitro* studies have demonstrated the possibility of rhein and danthron to enhance the absorption of the least water-soluble drugs like furosemide. Chinese herbal plants, such as *Polygonum paleaceum*, have been shown to reduce gastrointestinal motility and prevent the defecation reflex as well as gastroparesis. High-fiber herbal products can reduce the absorption of drugs through the sequestration of bile acids.^{67,71} Figure 3 illustrates the impact of drug-herb interactions.

Due to their affinity for similar receptor locations, herbal drugs and conventional pharmaceuticals might have additive or synergistic effects.^{71,77,84} When an integrated medicine strategy is desired, researching the processes through which HDIs take place may give a justification for combining conventional and phytotherapies.⁸⁵

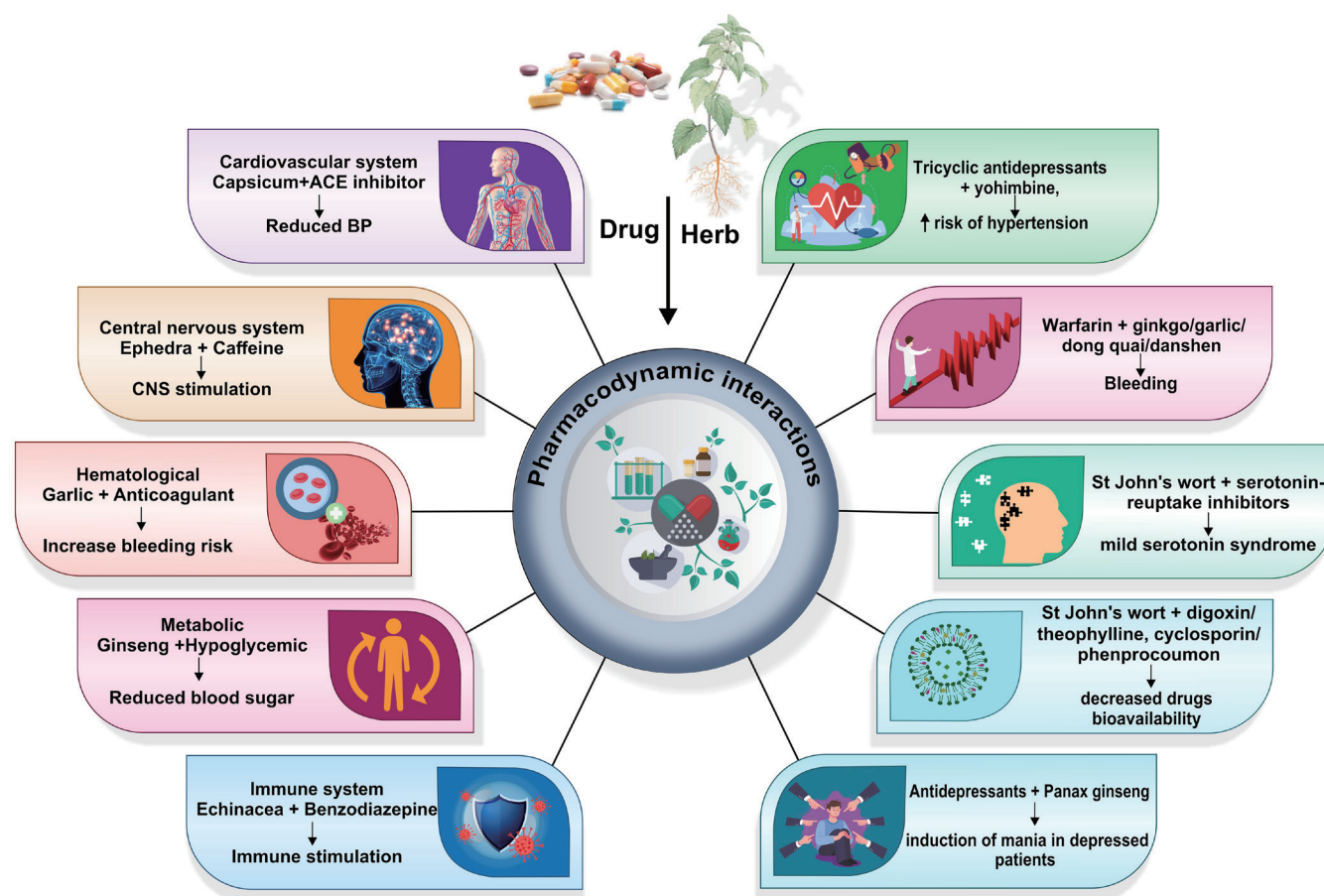


Fig. 3. Impact of drug-herb interactions. ACE, angiotensin-converting enzyme; BP, blood pressure; CNS, central nervous system.

Efficacy of herbal medicines

For millennia, traditional herbal medicine has been an integral part of human culture and healthcare practices. Rooted in ancient wisdom, it encompasses a rich history of healing methods passed down through generations. However, in the modern era, the efficacy of herbal remedies is increasingly scrutinized and tested against the rigors of scientific research. This evolving dynamic between traditional knowledge and scientific evidence highlights the need to bridge the gap between ancient wisdom and contemporary healthcare.

The rich history of traditional herbal medicine practices

Traditional herbal medicine has an extensive and diverse history that stretches across cultures and continents. Ancient civilizations such as the Egyptians, Chinese, Greeks, and Indigenous peoples of various regions have long relied on herbs and botanicals to treat ailments and promote well-being. These practices were often based on observations, trial and error, and accumulated wisdom passed down orally or through written texts.^{86,87} In traditional systems like Ayurveda in India, TCM, and Native American herbalism, herbs are seen as more than just remedies; they are regarded as holistic solutions that consider the balance of the body, mind, and spirit. This holistic approach emphasizes the interconnectedness of all aspects of health and the importance of maintaining harmony within the body.

The importance of validating traditional knowledge with modern scientific research

While traditional herbal medicine has stood the test of time and has often provided relief to countless individuals, the skepticism surrounding it has grown in the face of modern medicine's dominance. This has led to a crucial intersection between traditional knowledge and scientific evidence.⁸⁸ One of the primary reasons for subjecting herbal remedies to scientific scrutiny is to ensure safety and efficacy. Modern research methods allow for the identification of active compounds within herbs, dosage optimization, and understanding of potential side effects or interactions with other medications. This knowledge is vital for integrating herbal medicine into conventional healthcare systems. Additionally, validating traditional knowledge with scientific evidence helps bridge the gap between different healthcare paradigms. It facilitates the incorporation of effective herbal remedies into mainstream medicine, benefiting patients who may prefer or benefit from herbal treatments. It also preserves the valuable wisdom of traditional healers while ensuring the highest standard of care. Controlled clinical trials play a crucial role in generating substantiated data concerning safety and effectiveness. While the outcomes of clinical trials are promising,⁸⁹ additional extensive clinical investigations are essential to validate the efficacy of the approach. Ayurvedic preparations have been successfully evaluated for the treatment of obesity,⁹⁰ diabetes,⁹¹ cardiovascular diseases,⁹² bronchial asth-

ma and respiratory disorders,^{93,94} rheumatoid arthritis,^{95–97} and ischemic heart disease.^{98,99}

Examples of some common herbs scientifically proven to be effective

Turmeric, a staple in Indian Ayurvedic medicine, contains curcumin, a powerful anti-inflammatory and antioxidant compound. Scientific studies have confirmed its effectiveness in managing inflammatory disorders, such as arthritis and digestive issues. In a four-month randomized, double-blind, placebo-controlled trial, patients suffering from osteoarthritis of the knee displayed notable improvements in various health markers when treated with *Curcuma longa* extract compared to the placebo group. These improvements included significant reductions in the levels of biomarkers such as interleukin (IL) 1b, reactive oxygen species (ROS), and malondialdehyde, as well as enhancements in their visual analog scale and Western Ontario and McMaster University Osteoarthritis index scores.¹⁰⁰ Another study, this time focusing on patients with nonalcoholic fatty liver disease, found that curcumin, a natural polyphenol derived from turmeric, had a substantial impact on health. In a randomized placebo-controlled trial, curcumin was shown to reduce the body mass index and lower the serum levels of glucose, glycated hemoglobin, aspartate aminotransferase, alanine aminotransferase, triglycerides, and total cholesterol when compared to the placebo group.¹⁰¹ Curcumin was also investigated in a triple-blind, placebo-controlled study focusing on young women suffering from premenstrual syndrome and dysmenorrhea. The results revealed that curcumin significantly improved vitamin D and liver function enzyme tests, though it had no effect on the blood sugar levels.¹⁰² Likewise, according to the results of a triple-blind, pilot randomized controlled trial, a mouthwash containing 0.1% curcumin was found to effectively delay the onset of radiation-induced oral mucositis in patients with head and neck cancer, although it could not fully prevent it.¹⁰³ Shifting the focus to mental health, a 12-week randomized, double-blind, placebo-controlled study among healthy subjects indicated that the consumption of *C. longa* extract resulted in reduced chronic low-grade inflammation and improved mental health and mood disorders.¹⁰⁴

Furthermore, *Ginkgo biloba* extract was examined for its potential to address tinnitus and hearing loss. In a randomized-controlled, double-blind, three-arm trial, patients with hearing loss experienced significant improvements in tinnitus loudness and intensity after 90 days of *Ginkgo biloba* extract treatment.¹⁰⁵ For psychiatric disorders and cognitive function, a double-blind clinical study revealed that *Ginkgo biloba* extract led to improvements in patients' Mini-Mental State Examination and Wechsler Memory Scale Recipe III scores without any observed side effects, particularly benefiting older patients.¹⁰⁶ Moreover, *Ginkgo biloba* extract was also evaluated for its effectiveness, safety, and reliability in treating dizziness caused by cerebral arteriosclerosis in a multi-center, double-blind, randomized controlled trial.¹⁰⁷ Similarly, a 24-week randomized, double-blind, positive-controlled, prospective trial investigated the potential of an aqueous extract of *Terminalia bellerica* to lower uric acid and creatinine levels in individuals with chronic kidney disease and hyperuricemia. The trial found significant reductions in these markers.¹⁰⁸ In another clinical study, the aqueous extract of *Terminalia chebula* dramatically reduced the cardiovascular risk factors in patients with type 2 diabetes when compared to placebo.¹⁰⁹

Garlic (*Allium sativum*) has a long history of being utilized for its antimicrobial properties in various traditional systems. In an eight-week randomized-controlled trial, it was investigated for its

potential to enhance lipid markers in women suffering from polycystic ovary syndrome, suggesting its potential as a complementary therapy alongside standard care.¹¹⁰ Furthermore, the application of a 30% garlic ointment demonstrated superior wound healing with less noticeable scars compared to Vaseline treatment.¹¹¹ Additionally, incorporating raw crushed garlic into a standard diet was found to provide benefits to individuals with metabolic syndrome, making it a potential adjunctive remedy for prevention.¹¹² In a randomized, double-blind, placebo-controlled clinical study, aged garlic extract supplementation in individuals with obesity altered inflammation and immunity.¹¹³ Expanding on this, the implementation of aged garlic extract in the treatment of hypertensive patients proved to be an effective and well-tolerated approach in a 12-week double-blind, randomized, placebo-controlled, dose-response trial.¹¹⁴

Ginseng, a prominent herb in TCM, is known for its adaptogenic properties, which can aid the body in managing stress while potentially boosting energy levels and improving mental clarity. In a randomized, double-blind, placebo-controlled trial, Korean red ginseng (*Panax ginseng*) exhibited antifatigue effects in individuals with idiopathic chronic fatigue.¹¹⁵ In another randomized study, a combined treatment involving enriched Korean Red ginseng (*P. ginseng*) and American ginseng (*Panax quinquefolius*) led to improvements in central systolic blood pressure and aspects of pulse waveform, without directly affecting endothelial function in individuals with hypertension and type 2 diabetes.¹¹⁶ Besides, in a randomized, double-blind, crossover, placebo-controlled trial, exercise-stimulated muscle damage in physically active males was attenuated by American ginseng through modulation of the inflammatory response and lipid peroxidation.¹¹⁷ A separate randomized, double-blind, crossover, placebo-controlled trial was conducted to assess the impact of *P. ginseng* on genitourinary syndrome in postmenopausal women, revealing an improvement in associated symptoms after four weeks of the study. Additionally, a four-week clinical trial demonstrated that Korean red ginseng reduced allergic symptoms and total immunoglobulin E levels in patients with allergic rhinitis compared to individuals receiving a placebo.¹¹⁸

In summary, traditional herbal medicine carries with it a wealth of knowledge and wisdom that has served humanity for centuries. However, its integration into modern healthcare requires rigorous scientific validation to ensure safety and efficacy. The ongoing collaboration between traditional knowledge and scientific evidence not only preserves ancient healing traditions but also expands our understanding of the therapeutic potential of herbs. As we continue to explore the synergy between tradition and science, we unlock a broader spectrum of healing possibilities for the benefit of individuals and societies worldwide.

Bioactivity of herbal medicines

Bioactive compounds found in herbs represent a fascinating realm of naturally occurring chemical compounds within plants, particularly in herbs utilized for culinary, medicinal, or therapeutic purposes. These compounds possess distinctive biological or physiological effects on the human body, offering various health benefits and playing a pivotal role in traditional and alternative medicine.^{119,120}

The term bioactive is derived from the Greek word "bios," meaning "life," and the Latin word "activus," signifying dynamic, energetic, or engaged in activity. Bioactive compounds encompass a wide spectrum of substances, including both essential and nonessential compounds, which are naturally occurring and have

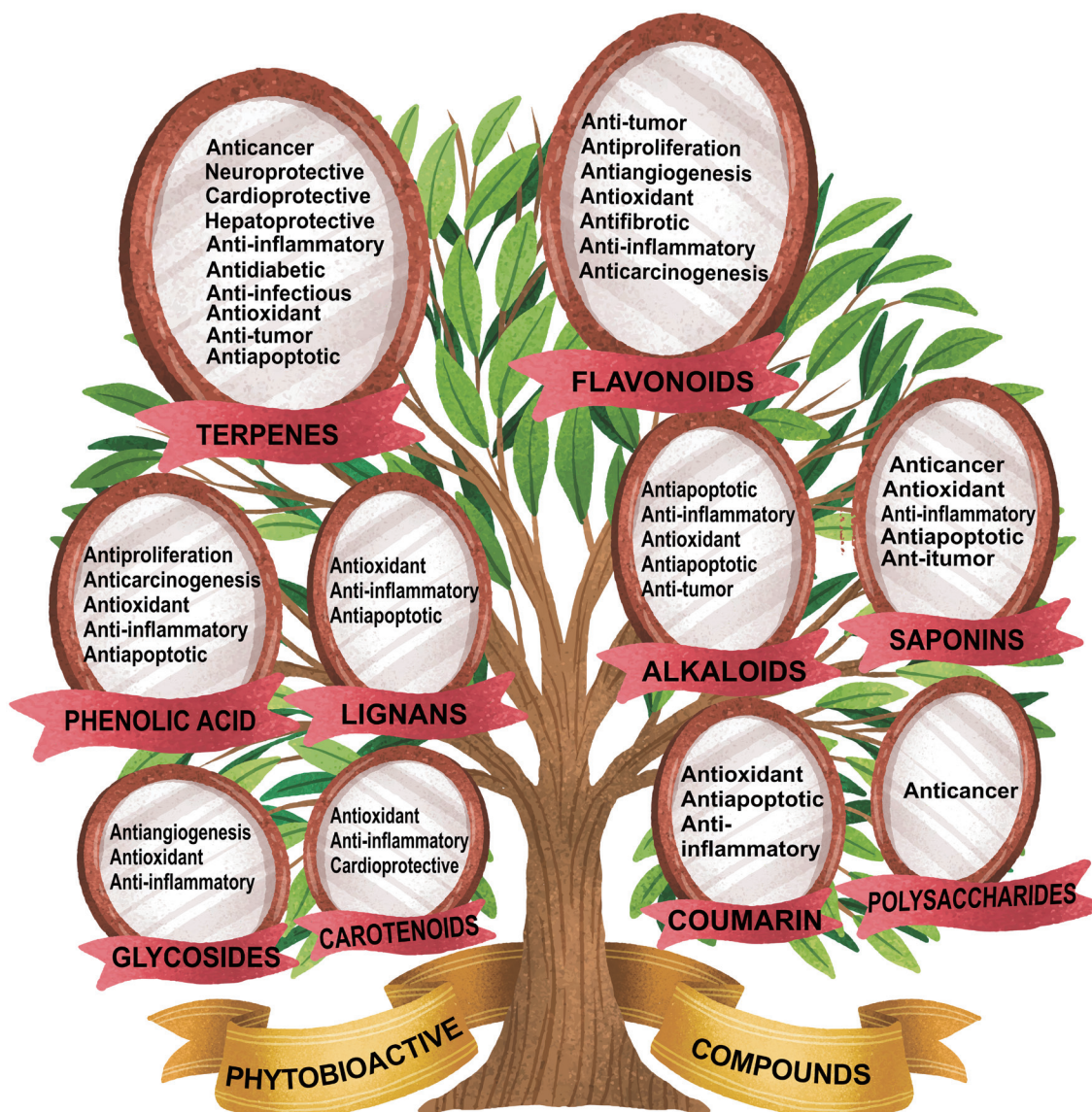


Fig. 4. Overview of the therapeutic potential of bioactive compounds.

the potential to influence human health. These compounds can be sourced from diverse natural origins, including plants and animals. Frequently found in trace amounts within their natural origins, these active biological compounds are dispersed across different plant components, including leaves, roots, barks, tubers, wood, gums, oleoresin exudations, fruits, figs, flowers, rhizomes, berries, twigs, and even the entire plant. Extraction procedures may be required after harvesting to refine or separate the specific bioactive compounds of interest.¹⁰

Diverse array of bioactive compounds

Bioactive compounds in herbs encompass a rich diversity of chemical constituents, including alkaloids, terpenoids, coumarins, flavonoids, nitrogen-containing compounds, organosulfur compounds, phenolics, and more. Each of these compounds possesses unique effects on the human body and has been harnessed for centuries in traditional medicine systems like Ayurveda, TCM, and In-

digenous healing practices due to their medicinal properties. These bioactive compounds are the very essence that imparts color, flavor, and aroma to herbs, while also offering a profound impact on human health when consumed. They contribute to a spectrum of bioactivities, such as anti-inflammatory, immunostimulatory, anticancer, antioxidant, antiproliferation, apoptosis, antifibrotic, and antimicrobial properties (Fig. 4). Additionally, they may support digestive health, bolster the immune system, or aid in the management of chronic conditions.¹¹

The complex mechanisms of bioactive compounds

The mechanisms through which bioactive compounds exert their effects on the human body are multifaceted and can vary widely. For instance, the antioxidants present in herbs serve to neutralize harmful free radicals, while anti-inflammatory compounds can alleviate inflammation and pain. The bioavailability of these compounds can be influenced by various factors, including cooking

methods, processing, and the digestive process, all of which affect their absorption and utilization within the body. Herbalists and traditional healers often prescribe herbs based on the bioactive compounds they contain to address specific health conditions. Modern scientific research also has delved into the therapeutic potential of bioactive compounds in herbs, shedding light on their mechanisms of action and potential applications in healthcare.

While bioactive compounds offer a wealth of benefits, it is essential to acknowledge that they can also carry side effects and may interact with medications. Therefore, the judicious use of herbs and herbal supplements under the guidance of healthcare professionals is crucial. Appropriate dosages and potential contraindications should always be considered.

Mechanistic insight of bioactive compounds

Phenolic compounds like gallic acid, ellagic acid, chlorogenic acid, curcumin, and 6-gingerol have various effects on many diseases. Gallic acid induces antiproliferation and apoptosis by regulating mitochondrial pathways, while ellagic acid prevents cancer by removing free radicals and preventing DNA fragmentation.^{27,34} Chlorogenic acid inhibits proliferation, profibrogenesis, and progression by inactivating extracellular-signal regulated kinase (ERK) 1/2, suppressing matrix metalloproteinase (MMP) 2 and MMP9 expression, and improving antioxidant capacity.¹²¹ Curcumin decreases oxidative damage and inhibits apoptosis in the myocardium (Janus kinase 2/ signal transducer and activator of transcription 3 signaling pathway),¹²² while 6-gingerol alleviates oxidative stress and inhibits cell death (upregulates phosphoinositide 3-kinase (PI3K)/protein kinase B (Akt) signaling pathway expression).¹²³

Flavonoids, including anthocyanins, flavanols, flavanones, flavones, flavonols, and isoflavonoids, possess specific bioactivity. Meanwhile, anthocyanins exhibit antitumor, antiproliferation, apoptosis, anti-angiogenesis, antioxidant, antifibrotic, and anti-inflammatory activities through various mechanisms.^{124,125} Flavanols inhibit metastasis by reducing osteopontin, exhibit anticarcinogenic activity by regulating the hedgehog/glioma 1 and wingless-related integration site/beta-catenin pathways and related genes, and induce apoptosis and antiproliferation by receptor tyrosine kinase inhibition, PI3K/Akt downregulation, and inactivation of nuclear factor kappa B (NFκB) via downregulation of Bcl-2 alpha and Bcl-xl.^{126–128} Flavonones inhibit metastasis by reducing the expression of MMP9, regulating mitochondrial pathways, and inhibiting invasion and metastasis by suppressing MMP9 transcription.^{129–131} Flavones induce apoptosis by upregulating poly(ADP-ribose) polymerase and Bcl-2-associated X protein, downregulating Bcl-2 protein, and inhibiting hepatic stellate cell activation by mitochondria-activated apoptosis. They also inhibit carcinogenesis by upregulating Bcl-2-associated X protein and p53, inhibiting hepatic stellate cell activation by MMP activation, and regulating the antifibrogenic/profibrogenic molecule balance. Flavonols also inhibit hepatocellular carcinoma development by inhibiting p21-activated kinase 1 and mitogen-activated protein kinase/ERK as well as block metastasis by reversing the epithelial-mesenchymal transition.^{132–134}

Lignans and glycosides have various anti-inflammatory and antioxidant properties. Lignans inhibit p38 phosphorylation and c-Jun N-terminal kinase (JNK) death pathways,^{135,136} while glycosides like resveratrol inhibit vascular endothelial growth factor expression, profibrogenesis-related genes, and hepatic stellate cell activation. Resveratrol regulates hepatocyte growth factor/c-Met signaling and downregulates NFκB. Polydatin promotes au-

tophagic flux, reduces ROS, and cell death, while lignans inhibit p38 phosphorylation and JNK death.^{137–139}

Triterpenoid (terpene) has various anticancer and cardioprotective properties. It inhibits cell proliferation, migration, angiogenesis, and apoptosis by inhibiting the Src/focal adhesion kinase/ERK and PI3K/Akt signaling pathways. It also suppresses NFκB and induces apoptosis by activating the ERK/JNK/p38 pathway. It exhibits neuroprotective activity by downregulating IL6, IL1β, and tumor necrosis factor alpha, Bcl-2-associated X protein, and upregulating Bcl. Furthermore, it inhibits apoptosis and antiapoptotic effects by inhibiting the transforming growth factor beta-activated kinase 1–JNK pathway. It prevents microglial migration towards neurons and removes intracellular ROS. It also has antioxidant effects by inhibiting mitogen-activated protein kinase/mitochondrial-dependent apoptotic pathways and reducing myocardial hypertrophy. It also expresses hepatoprotective activity by suppressing protein kinase RNA-like endoplasmic reticulum kinase/activating transcription factor 6 and iron regulatory protein 1 pathway activation, preventing liver fibrosis. It also has anti-inflammatory activity by inhibiting NFκB pathway activation and the nucleotide-binding oligomerization domain, leucine-rich repeat, and pyrin domain-containing protein 3 inflammasome. It also has anti-infectious activity by stimulating the anti-inflammatory cytokines granulocyte-macrophage colony-stimulating factor, IL10, and IL12 as well as inhibiting the expression of proinflammatory cytokines.^{140,141}

Sesquiterpene lactone (artemisinin) and diterpene lactone (ginkgolide B) have various anti-inflammatory, antioxidant, and antitumor properties. Artemisinin suppresses nucleotide-binding oligomerization domain, leucine-rich repeat, and pyrin domain-containing protein 3 inflammasome activation, while diterpene lactone inhibits apoptosis induced by endoplasmic reticulum stress via PI3K/Akt/mammalian target of rapamycin signaling.¹⁴² Alkaloids promote proliferation, attenuate apoptosis, and inhibit ROS production.¹³⁶ Saponins exert antioxidant, anticancer, anti-inflammatory, antitumor, and antiapoptotic properties.^{143,144} Polysaccharides block P-selectin-mediated neutrophil rolling on the vessel wall,¹⁴⁵ while carotenoids inhibit inflammation and ROS accumulation.¹⁴⁶ Coumarin expresses antioxidant, antiapoptotic, and anti-inflammatory activity by inhibiting the inhibitor of nuclear factor kappa B alpha/NFκB signaling pathway and high-mobility group box 1 expression.¹⁴⁷

Scientific exploration into the potential health benefits of bioactive compounds in herbs is an ongoing endeavor. Researchers are continually working to unravel the intricacies of their mechanisms of action and their applicability in diverse healthcare contexts. As research unfolds, we gain a deeper understanding of how bioactive compounds in herbs can be harnessed for the betterment of human health.

Conclusion

In conclusion, the resurgence of interest in herbal medicine highlights the necessity of reconciling traditional wisdom with contemporary scientific rigor. The pursuit of safe, effective, and evidence-based herbal remedies necessitates collaborative efforts across disciplines such as botany, pharmacology, clinical research, and regulatory oversight. As ongoing research continues to unveil the intricacies of herbal bioactivity, it is anticipated that herbal medicine will solidify its position as a valuable component of comprehensive healthcare. This will cater to the evolving needs of individuals who seek holistic and natural approaches to well-being.

Acknowledgments

The authors are grateful to revered Swami Ramdev Ji for his immense support and guidance. The authors also acknowledge the help and support provided by Patanjali Herbal Research Department, Patanjali Research Foundation, Haridwar, India. In addition, the authors are also grateful to Mr. Sunil Kumar for providing graphical assistance with this manuscript. The authors are also thankful to the Ministry of AYUSH under the Grant-in-Aid for the Establishment of the Centre of Excellence of Renovation and Upgradation of Patanjali Ayurveda Hospital, Haridwar.

Funding

This study was supported by the Ministry of Ayush, Government of India, under Ayurswasthya Yojana-3988.

Conflict of interest

The authors have no conflict of interests related to this publication.

Author contributions

Study concept and design (AB), acquisition of data (SS, AK), analysis and interpretation of data, drafting of the manuscript (DS, NS), critical revision of the manuscript for important intellectual content (NS), administrative, and study supervision (VA). All authors have made a significant contribution to this study and have approved the final manuscript.

References

- Aware CB, Patil DN, Suryawanshi SS, Mali PR, Rane MR, Gurav RG, *et al*. Natural bioactive products as promising therapeutics: A review of natural product-based drug development. *S Afr J Bot* 2022;151:512–528. doi:10.1016/j.sajb.2022.05.028.
- Islam SU, Dar TUH, Khuroo AA, Bhat BA, Mangral ZA, Tariq L, *et al*. DNA barcoding aids in identification of adulterants of *Trillium govanianum* Wall. ex D. Don. *J Appl Res Med Aromat Plants* 2021;23:100305. doi:10.1016/j.jarmap.2021.100305.
- Jitäreanu A, Trifan A, Vieriu M, Caba IC, Mârțu I, Agoroaei L. Current trends in toxicity assessment of herbal medicines: A narrative review. *Processes* 2022;11(1):83. doi:10.3390/pr11010083.
- Tulunay M, Aypak C, Yikilkan H, Gorpelioglu S. Herbal medicine use among patients with chronic diseases. *J Intercult Ethnopharmacol* 2015;4(3):217–220. doi:10.5455/jice.20150623090040, PMID:26401410.
- Peltzer K, Pengpid S. The use of herbal medicines among chronic disease patients in Thailand: a cross-sectional survey. *J Multidiscip Healthc* 2019;12:573–582. doi:10.2147/JMDH.S212953, PMID:31413584.
- Tnah LH, Lee SL, Tan AL, Lee CT, Ng KK, Ng CH, *et al*. DNA barcode database of common herbal plants in the tropics: a resource for herbal product authentication. *Food control* 2019;95:318–326. doi:10.1016/j.foodcont.2018.08.022.
- Jordan SA, Cunningham DG, Marles RJ. Assessment of herbal medicinal products: challenges, and opportunities to increase the knowledge base for safety assessment. *Toxicol Appl Pharmacol* 2010;243(2):198–216. doi:10.1016/j.taap.2009.12.005, PMID:20018204.
- Brantley SJ, Argikar AA, Lin YS, Nagar S, Paine MF. Herb-drug interactions: challenges and opportunities for improved predictions. *Drug Metab Dispos* 2014;42(3):301–317. doi:10.1124/dmd.113.055236, PMID:24335390.
- Singh S, Bansal A, Singh V, Chopra T, Poddar J. Flavonoids, alkaloids and terpenoids: a new hope for the treatment of diabetes mellitus. *J Diabetes Metab Disord* 2022;21(1):941–950. doi:10.1007/s40200-021-00943-8, PMID:35673446.
- Roy A, Khan A, Ahmad I, Alghamdi S, Rajab BS, Babalghith AO, *et al*. Flavonoids a Bioactive Compound from Medicinal Plants and Its Therapeutic Applications. *Biomed Res Int* 2022;2022:5445291. doi:10.1155/2022/5445291, PMID:35707379.
- Riaz M, Khalid R, Afzal M, Anjum F, Fatima H, Zia S, *et al*. Phytobioactive compounds as therapeutic agents for human diseases: A review. *Food Sci Nutr* 2023;11(6):2500–2529. doi:10.1002/fsn3.3308, PMID:37324906.
- Fernández-Ochoa Á, Leyva-Jiménez FJ, De la Luz Cádiz-Gurrea M, Pimentel-Moral S, Segura-Carretero A. The Role of High-Resolution Analytical Techniques in the Development of Functional Foods. *Int J Mol Sci* 2021;22(6):3220. doi:10.3390/ijms22063220, PMID:33809986.
- Rinschen MM, Ivanisevic J, Giera M, Siuzdak G. Identification of bioactive metabolites using activity metabolomics. *Nat Rev Mol Cell Biol* 2019;20(6):353–367. doi:10.1038/s41580-019-0108-4, PMID:30814649.
- Fu Y, Yang JC, Cunningham AB, Towns AM, Zhang Y, Yang HY, *et al*. A billion cups: The diversity, traditional uses, safety issues and potential of Chinese herbal teas. *J Ethnopharmacol* 2018;222:217–228. doi:10.1016/j.jep.2018.04.026, PMID:29730132.
- Zhao J, Deng JW, Chen YW, Li SP. Advanced phytochemical analysis of herbal tea in China. *J Chromatogr A* 2013;1313:2–23. doi:10.1016/j.chroma.2013.07.039, PMID:23906802.
- Dori D, Méda N, Gbaguidi FA, Quetin-Leclercq J, Semdé R. [Wholesale distribution and delivery of plant-based medicinal products through the pharmaceutical system of Burkina Faso]. *Ann Pharm Fr* 2020;78(2):179–188. doi:10.1016/j.pharma.2019.12.003, PMID:32037029.
- Petit F. Interactions pharmacocinétiques entre préparation à base de plantes et médicament: une revue de l'importance Clinique. *Phytothérapie* 2012;10(3):170–182. doi:10.1007/s10298-012-0705-2.
- Sahoo N, Manchikanti P, Dey S. Herbal drugs: standards and regulation. *Fitoterapia* 2010;81(6):462–471. doi:10.1016/j.fitote.2010.02.001, PMID:20156530.
- Muyumba NW, Mutombo SC, Sheridan H, Nachtergaeel A, Duez P. Quality control of herbal drugs and preparations: The methods of analysis, their relevance and applications. *Talanta Open* 2021;4:100070. doi:10.1016/j.talo.2021.100070.
- George P. Concerns regarding the safety and toxicity of medicinal plants-An overview. *J Appl Pharm Sci* 2011;1(6):40–44.
- Boullata JI, Nace AM. Safety issues with herbal medicine. *Pharmacotherapy* 2000;20(3):257–269. doi:10.1592/phco.20.4.257.34886, PMID:10730682.
- Ernst E. Herbal medicines: balancing benefits and risks. *Novartis Found Symp* 2007;282:154–167. doi:10.1002/9780470319444.ch11, PMID:17913230.
- Mardani S, Nasri H, Rafieian-Kopaei M, Hajian S. Herbal medicine and diabetic kidney disease. *J Nephropharmacol* 2013;2(1):1–2. PMID:28197432.
- Karimi A, Majlesi M, Rafieian-Kopaei M. Herbal versus synthetic drugs; beliefs and facts. *J Nephropharmacol* 2015;4(1):27–30. PMID:28197471.
- Ekor M. The growing use of herbal medicines: issues relating to adverse reactions and challenges in monitoring safety. *Front Pharmacol* 2014;4:177. doi:10.3389/fphar.2013.00177, PMID:24454289.
- Ifeoma O, Oluwakanyinsola S. Screening of herbal medicines for potential toxicities. In: Gowder S (ed). *New insights into toxicity and drug testing*. Rijeka: IntechOpen; 2013:63–88. doi:10.5772/54493.
- Jagan S, Ramakrishnan G, Anandakumar P, Kamaraj S, Devaki T. Antiproliferative potential of gallic acid against diethylnitrosamine-induced rat hepatocellular carcinoma. *Mol Cell Biochem* 2008;319(1-2):51–59. doi:10.1007/s11010-008-9876-4, PMID:18629614.
- Msomi NZ, Simelane MB. Herbal medicine. In: Builders PF (ed). *Herbal Medicine*. Rijeka: IntechOpen; 2019:215–227. doi:10.5772/intechopen.72816.
- Mirzaei R, Sadoughi F, Tahmasebian S, Mojahedi M. Progresses and challenges in the traditional medicine information system: A systematic review. *J Pharm Pharmacogn Res* 2019;7(4):246–259. doi:10.56499/jppres19.662_7.4.246.
- Ahmad Khan MS, Ahmad I. Chapter 1-Herbal medicine: current trends and future prospects. In: Ahmad Khan MS, Ahmad I, Chat-

- topadhyay D (eds). *New Look to Phytomedicine: Advancements in Herbal Products as Novel Drug Leads*. Cambridge: Academic Press; 2019:3–13. doi:10.1016/B978-0-12-814619-4.00001-X.
- [31] Wake GE, Fittie GW. Magnitude and Determinant Factors of Herbal Medicine Utilization Among Mothers Attending Their Antenatal Care at Public Health Institutions in Debre Berhan Town, Ethiopia. *Front Public Health* 2022;10:883053. doi:10.3389/fpubh.2022.883053, PMID:35570953.
 - [32] Nasri H. Cisplatin therapy and the problem of gender-related nephrotoxicity. *J Nephropharmacol* 2013;2(2):13–14. PMID:28197436.
 - [33] Rafieian-Kopaei M. Medicinal plants for renal injury prevention. *J Renal Inj Prev* 2013;2(2):63–65. doi:10.12861/jrip.2013.21, PMID:25340130.
 - [34] Chang YJ, Hsu SL, Liu YT, Lin YH, Lin MH, Huang SJ, *et al*. Gallic acid induces necroptosis via TNF- α signaling pathway in activated hepatic stellate cells. *PLoS One* 2015;10(3):e0120713. doi:10.1371/journal.pone.0120713, PMID:25816210.
 - [35] Welz AN, Emberger-Klein A, Menrad K. Why people use herbal medicine: insights from a focus-group study in Germany. *BMC Complement Altern Med* 2018;18(1):92. doi:10.1186/s12906-018-2160-6, PMID:29544493.
 - [36] Mulholland CA, Benford DJ. What is known about the safety of multi-vitamin-multimineral supplements for the generally healthy population? Theoretical basis for harm. *Am J Clin Nutr* 2007;85(1):318S–322S. doi:10.1093/ajcn/85.1.318S, PMID:17209218.
 - [37] Jacobus CH, Holick MF, Shao Q, Chen TC, Holm IA, Kolodny JM, *et al*. Hypervitaminosis D associated with drinking milk. *N Engl J Med* 1992;326(18):1173–1177. doi:10.1056/NEJM1992040303261801, PMID:1313547.
 - [38] Phua DH, Zosel A, Heard K. Dietary supplements and herbal medicine toxicities-when to anticipate them and how to manage them. *Int J Emerg Med* 2009;2(2):69–76. doi:10.1007/s12245-009-0105-z, PMID:20157447.
 - [39] Huang WF, Wen KC, Hsiao ML. Adulteration by synthetic therapeutic substances of traditional Chinese medicines in Taiwan. *J Clin Pharmacol* 1997;37(4):344–350. doi:10.1002/j.1552-4604.1997.tb04312.x, PMID:9115061.
 - [40] Ernst E. Adulteration of Chinese herbal medicines with synthetic drugs: a systematic review. *J Intern Med* 2002;252(2):107–113. doi:10.1046/j.1365-2796.2002.00999.x, PMID:12190885.
 - [41] Yee SK, Chu SS, Xu YM, Choo PL. Regulatory control of Chinese Proprietary Medicines in Singapore. *Health Policy* 2005;71(2):133–149. doi:10.1016/j.healthpol.2003.09.013, PMID:15607377.
 - [42] Ariffin SH, A Wahab I, Hassan Y, Abd Wahab MS. Adulterated Traditional-Herbal Medicinal Products and Its Safety Signals in Malaysia. *Drug Healthc Patient Saf* 2021;13:133–140. doi:10.2147/DHPS.S305953, PMID:34135639.
 - [43] Al Lawati HA, Al Busaidi I, Kadavilpparampu AM, Suliman FO. Determination of Common Adulterants in Herbal Medicine and Food Samples using Core-shell Column Coupled to Tandem Mass Spectrometry. *J Chromatogr Sci* 2017;55(3):232–242. doi:10.1093/chromsci/bmw175, PMID:27881492.
 - [44] Raviraja Shetty G, Harsha R. Adulteration in medicinal plants and herbal drugs. *Int J Agric Sci* 2021;12(1):12–17. doi:10.53390/ijas.v12i1.4.
 - [45] Krapf R. Development of Cushing's syndrome after use of a herbal remedy. *Lancet* 2002;360(9348):1884. doi:10.1016/S0140-6736(02)11747-8, PMID:12480390.
 - [46] Chan CY, Ng SW, Ching CK, Mak TWL. Detection of 28 Corticosteroids in Pharmaceutical and Proprietary Chinese Medicinal Products Using Liquid Chromatography-Tandem Mass Spectrometry. *J Chromatogr Sci* 2021;59(6):548–554. doi:10.1093/chromsci/bmaa140, PMID:33479748.
 - [47] Kloner RA, Goggin P, Goldstein I, Hackett G, Kirby MG, Osterloh I, *et al*. A New Perspective on the Nitrate-Phosphodiesterase Type 5 Inhibitor Interaction. *J Cardiovasc Pharmacol Ther* 2018;23(5):375–386. doi:10.1177/1074248418771896, PMID:29739235.
 - [48] Newmaster SG, Grguric M, Shanmughanandhan D, Ramalingam S, Ragupathy S. DNA barcoding detects contamination and substitution in North American herbal products. *BMC Med* 2013;11:222. doi:10.1186/1741-7015-11-222, PMID:24120035.
 - [49] Letsyo E, Jerz G, Winterhalter P, Lindigkeit R, Beuerle T. Incidence of Pyrrolizidine Alkaloids in Herbal Medicines from German Retail Markets: Risk Assessments and Implications to Consumers. *Phytother Res* 2017;31(12):1903–1909. doi:10.1002/ptr.5935, PMID:28960556.
 - [50] Han JP, Li MN, Luo K, Liu MZ, Chen XC, Chen SL. Identification of *Datura flos* and its adulterants based on DNA barcoding technique. *Yao Xue Xue Bao* 2011;46(11):1408–1412. PMID:22260038.
 - [51] Pandey R, Tiwari RK, Shukla SS. Omics: A newer technique in herbal drug standardization & quantification. *J Young Pharm* 2016;8(2):76–81. doi:10.5530/jyp.2016.2.4.
 - [52] World Health Organization. WHO guidelines for assessing quality of herbal medicines with reference to contaminants and residues. Geneva: World Health Organization; 2007.
 - [53] World Health Organization. WHO guidelines on good agricultural and collection practices (GACP) for medicinal plants. Geneva: World Health Organization; 2003.
 - [54] Liang YZ, Xie P, Chan K. Quality control of herbal medicines. *J Chromatogr B Analyt Technol Biomed Life Sci* 2004;812(1-2):53–70. doi:10.1016/j.jchromb.2004.08.041, PMID:15556488.
 - [55] Wang H, Chen M, Li J, Chen N, Chang Y, Dou Z, *et al*. Quality consistency evaluation of Kudiezi Injection based on multivariate statistical analysis of the multidimensional chromatographic fingerprint. *J Pharm Biomed Anal* 2020;177:112868. doi:10.1016/j.jpba.2019.112868, PMID:31539713.
 - [56] Nazim MD, Aslam M, Khatoon R, Asif M, Chaudhary SS. Physico-chemical standardization of Hansraj (*Adiantum capillus-Veneris*). *J Drug Deliv Ther* 2018;8(6-s):195–203. doi:10.22270/jddt.v8i6-s.2229.
 - [57] Marchese A, Barbieri R, Coppo E, Orhan IE, Daglia M, Nabavi SF, *et al*. Antimicrobial activity of eugenol and essential oils containing eugenol: A mechanistic viewpoint. *Crit Rev Microbiol* 2017;43(6):668–689. doi:10.1080/1040841X.2017.1295225, PMID:28346030.
 - [58] Deogade MS, Prasad KS. Standardization of wild *Krushnatulasi* (*Ocimum tenuiflorum* Linn) leaf. *Int J Ayurveda Res* 2019;10(1):52–61. doi:10.47552/ijam.v10i1.1172.
 - [59] Shaheen N, Imam S, Abidi S, Sultan RA, Azhar I, Mahmood ZA. Comparative pharmacognostic evaluation and standardization of *Capsicum annum* L.(red chili). *Int J Pharm Sci Res* 2018;9(7):2807–2817. doi:10.13040/IJPSR.0975-8232.9(7).2807-17.
 - [60] Liu C, Guo DA, Liu L. Quality transitivity and traceability system of herbal medicine products based on quality markers. *Phytomedicine* 2018;44:247–257. doi:10.1016/j.phymed.2018.03.006, PMID:29631807.
 - [61] Steinhoff B. Review: Quality of herbal medicinal products: State of the art of purity assessment. *Phytomedicine* 2019;60:153003. doi:10.1016/j.phymed.2019.153003, PMID:31327654.
 - [62] Zhang J, Wider B, Shang H, Li X, Ernst E. Quality of herbal medicines: challenges and solutions. *Complement Ther Med* 2012;20(1-2):100–106. doi:10.1016/j.ctim.2011.09.004, PMID:22305255.
 - [63] Fernandes FH, Salgado HR. Gallic Acid: Review of the Methods of Determination and Quantification. *Crit Rev Anal Chem* 2016;46(3):257–265. doi:10.1080/10408347.2015.1095064, PMID:26440222.
 - [64] Rashid S, Zafar M, Ahmad M, Lone FA, Shaheen S, Sultana S, *et al*. Microscopic investigations and pharmacognostic techniques used for the standardization of herbal drug *Nigella sativa* L. *Microsc Res Tech*. 2018;81(12):1443–1450. doi:10.1002/jemt.23110, PMID:30351462.
 - [65] Rashid S, Zafar M, Ahmad M, Lone FA, Shaheen S, Sultana S, *et al*. Microscopic investigations and pharmacognostic techniques used for the standardization of herbal drug *Nigella sativa* L. *Microsc Res Tech*. 2018;81(12):1443–1450. doi:10.1002/jemt.23110, PMID:303514628.
 - [66] Fugh-Berman A. Herb-drug interactions. *Lancet* 2000;355(9198):134–138. doi:10.1016/S0140-6736(99)06457-0, PMID:10675182.
 - [67] Neergheen-Bhujun VS. Underestimating the toxicological challenges associated with the use of herbal medicinal products in developing countries. *Biomed Res Int* 2013;2013:804086. doi:10.1155/2013/804086, PMID:24163821.
 - [68] Meijerman I, Beijnen JH, Schellens JH. Herb-drug interactions in oncology: focus on mechanisms of induction. *Oncologist* 2006;11(7):742–752. doi:10.1634/theoncologist.11-7-742, PMID:16880233.
 - [69] Farkas D, Shader RI, von Moltke LL, Greenblatt DJ. Mechanisms and consequences of drug-drug interactions. In: Gad SC (ed). *Preclinical development handbook: ADME and biopharmaceuti-*

- cal properties. New York: John Wiley & Sons, Inc; 2008:879–917. doi:10.1002/9780470249031.ch25.
- [70] Fasinu PS, Bouic PJ, Rosenkranz B. An overview of the evidence and mechanisms of herb-drug interactions. *Front Pharmacol* 2012;3:69. doi:10.3389/fphar.2012.00069, PMID:22557968.
- [71] Brown L, Heyneke O, Brown D, van Wyk JP, Hamman JH. Impact of traditional medicinal plant extracts on antiretroviral drug absorption. *J Ethnopharmacol* 2008;119(3):588–592. doi:10.1016/j.jep.2008.06.028, PMID:18640255.
- [72] Patsalos PN, Perucca E. Clinically important drug interactions in epilepsy: interactions between antiepileptic drugs and other drugs. *Lancet Neurol* 2003;2(8):473–481. doi:10.1016/s1474-4422(03)00483-6, PMID:12878435.
- [73] Coppola M, Mondola R. Potential action of betel alkaloids on positive and negative symptoms of schizophrenia: a review. *Nord J Psychiatry* 2012;66(2):73–78. doi:10.3109/08039488.2011.605172, PMID:21859398.
- [74] Engelberg D, McCutcheon A, Wiseman S. A case of ginseng-induced mania. *J Clin Psychopharmacol* 2001;21(5):535–537. doi:10.1097/00004714-200110000-00015, PMID:11593083.
- [75] Borrelli F, Izzo AA. Herb-drug interactions with St John's wort (*Hypericum perforatum*): an update on clinical observations. *AAPS J* 2009;11(4):710–727. doi:10.1208/s12248-009-9146-8, PMID:19859815.
- [76] Nicolussi S, Drewe J, Butterweck V, Meyer Zu Schwabedissen HE. Clinical relevance of St. John's wort drug interactions revisited. *Br J Pharmacol* 2020;177(6):1212–1226. doi:10.1111/bph.14936, PMID:31742659.
- [77] Yin OQ, Tomlinson B, Waye MM, Chow AH, Chow MS. Pharmacogenetics and herb-drug interactions: experience with Ginkgo biloba and omeprazole. *Pharmacogenetics* 2004;14(12):841–850. doi:10.1097/00008571-200412000-00007, PMID:15608563.
- [78] Taki Y, Yokotani K, Yamada S, Shinozuka K, Kubota Y, Watanabe Y, *et al*. Ginkgo biloba extract attenuates warfarin-mediated anticoagulation through induction of hepatic cytochrome P450 enzymes by bilobalide in mice. *Phytomedicine* 2012;19(2):177–182. doi:10.1016/j.phymed.2011.06.020, PMID:21802929.
- [79] Alvarez AI, Real R, Pérez M, Mendoza G, Prieto JG, Merino G. Modulation of the activity of ABC transporters (P-glycoprotein, MRP2, BCRP) by flavonoids and drug response. *J Pharm Sci* 2010;99(2):598–617. doi:10.1002/jps.21851, PMID:19544374.
- [80] Paine MF, Widmer WW, Pusek SN, Beavers KL, Criss AB, Snyder J, *et al*. Further characterization of a furanocoumarin-free grapefruit juice on drug disposition: studies with cyclosporine. *Am J Clin Nutr* 2008;87(4):863–871. doi:10.1093/ajcn/87.4.863, PMID:18400708.
- [81] Sanderson JT, Hordijk J, Denison MS, Springsteel MF, Nantz MH, van den Berg M. Induction and inhibition of aromatase (CYP19) activity by natural and synthetic flavonoid compounds in H295R human adrenocortical carcinoma cells. *Toxicol Sci* 2004;82(1):70–79. doi:10.1093/toxsci/kfh257, PMID:15319488.
- [82] Lundahl J, Regårdh CG, Edgar B, Johnsson G. Relationship between time of intake of grapefruit juice and its effect on pharmacokinetics and pharmacodynamics of felodipine in healthy subjects. *Eur J Clin Pharmacol* 1995;49(1-2):61–67. doi:10.1007/BF00192360, PMID:8751023.
- [83] Pasi AK. Herb-drug interaction: an overview. *Int J Pharm Sci Res* 2013;4(10):3770–3774. doi:10.13040/IJPSR.0975-8232.4(10).3770-74.
- [84] Suroowan S, Abdallah HH, Mahomoodally MF. Herb-drug interactions and toxicity: Underscoring potential mechanisms and forecasting clinically relevant interactions induced by common phytoconstituents via data mining and computational approaches. *Food Chem Toxicol* 2021;156:112432. doi:10.1016/j.fct.2021.112432, PMID:34293424.
- [85] Petrovska BB. Historical review of medicinal plants' usage. *Pharmacogn Rev* 2012;6(11):1–5. doi:10.4103/0973-7847.95849, PMID:22654398.
- [86] Šantić Ž, Pravić N, Bevanda M, Galić K. The historical use of medicinal plants in traditional and scientific medicine. *Psychiatr Danub* 2017;29(Suppl 4):787–792. PMID:29278625.
- [87] Yuan H, Ma Q, Ye L, Piao G. The Traditional Medicine and Modern Medicine from Natural Products. *Molecules* 2016;21(5):559. doi:10.3390/molecules21050559, PMID:27136524.
- [88] Patwardhan B, Warude D, Pushpangadan P, Bhatt N. Ayurveda and traditional Chinese medicine: a comparative overview. *Evid Based Complement Alternat Med* 2005;2(4):465–473. doi:10.1093/ecam/neh140, PMID:16322803.
- [89] Balkrishna A, Sharma S, Maity M, Tomer M, Singh R, Gohel V, *et al*. Divya-WeightGo combined with moderate aerobic exercise remediates adiposopathy, insulin resistance, serum biomarkers, and hepatic lipid accumulation in high-fat diet-induced obese mice. *Biomed Pharmacother* 2023;163:114785. doi:10.1016/j.biopha.2023.114785, PMID:37137183.
- [90] Balkrishna A, Gohel V, Pathak N, Tomer M, Rawat M, Dev R, *et al*. Anti-hyperglycemic contours of Madhugrit are robustly translated in the *Caenorhabditis elegans* model of lipid accumulation by regulating oxidative stress and inflammatory response. *Front Endocrinol (Lausanne)* 2022;13:1064532. doi:10.3389/fendo.2022.1064532, PMID:36545334.
- [91] Balkrishna A, Gohel V, Pathak N, Singh R, Tomer M, Rawat M, *et al*. Anti-oxidant response of lipidom modulates lipid metabolism in *Caenorhabditis elegans* and in OxLDL-induced human macrophages by tuning inflammatory mediators. *Biomed Pharmacother* 2023;160:114309. doi:10.1016/j.biopha.2023.114309, PMID:36709598.
- [92] Sekhar AV, Gandhi DN, Rao NM, Rawal UD. An experimental and clinical evaluation of anti-asthmatic potentialities of Devadaru compound (DC). *Indian J Physiol Pharmacol* 2003;47(1):101–107. PMID:12708131.
- [93] Balkrishna A, Goswami S, Singh H, Gohel V, Dev R, Haldar S, *et al*. Herbo-mineral formulation, Divya-Swasari-Vati averts SARS-CoV-2 pseudovirus entry into human alveolar epithelial cells by interfering with spike protein-ACE 2 interaction and IL-6/TNF- α / NF- κ B signaling. *Front Pharmacol* 2022;13:1024830. doi:10.3389/fphar.2022.1024830, PMID:36386162.
- [94] Chopra A, Lavin P, Patwardhan B, Chitre D. Randomized double blind trial of an ayurvedic plant derived formulation for treatment of rheumatoid arthritis. *J Rheumatol* 2000;27(6):1365–1372. PMID:10852255.
- [95] Balkrishna A, Sakat SS, Joshi K, Paudel S, Joshi D, Joshi K, *et al*. Anti-Inflammatory and Anti-Arthritic Efficacies of an Indian Traditional Herbo-Mineral Medicine "Divya Amvatar Ras" in Collagen Antibody-Induced Arthritis (CAIA) Mouse Model Through Modulation of IL-6/IL-1 β /TNF- α /NF κ B Signaling. *Front Pharmacol* 2019;10:659. doi:10.3389/fphar.2019.00659, PMID:31333447.
- [96] Xiong H, Ding X, Wang H, Jiang H, Wu X, Tu C, *et al*. Tibetan medicine Kuan-Jin-Teng exerts anti-arthritis effects on collagen-induced arthritis rats via inhibition the production of pro-inflammatory cytokines and down-regulation of MAPK signaling pathway. *Phytomedicine* 2019;57:271–281. doi:10.1016/j.phymed.2018.12.023, PMID:30802713.
- [97] Gupta R, Singhal S, Goyle A, Sharma VN. Antioxidant and hypocholesterolaemic effects of Terminalia arjuna tree-bark powder: a randomised placebo-controlled trial. *J Assoc Physicians India* 2001;49:231–235. PMID:11225136.
- [98] Kumar PU, Adhikari P, Pereira P, Bhat P. Safety and efficacy of Hartone in stable angina pectoris—an open comparative trial. *J Assoc Physicians India* 1999;47(7):685–689. PMID:10778587.
- [99] Srivastava S, Saksena AK, Khattri S, Kumar S, Dagur RS. Curcuma longa extract reduces inflammatory and oxidative stress biomarkers in osteoarthritis of knee: a four-month, double-blind, randomized, placebo-controlled trial. *Inflammopharmacology* 2016;24(6):377–388. doi:10.1007/s10787-016-0289-9, PMID:27761693.
- [100] Rahmani S, Asgary S, Askari G, Keshvari M, Hatamipour M, Feizi A, *et al*. Treatment of Non-alcoholic Fatty Liver Disease with Curcumin: A Randomized Placebo-controlled Trial. *Phytother Res* 2016;30(9):1540–1548. doi:10.1002/ptr.5659, PMID:27270872.
- [101] Arabnezhad L, Mohammadifard M, Rahmani L, Majidi Z, Ferns GA, Bahrami A. Effects of curcumin supplementation on vitamin D levels in women with premenstrual syndrome and dysmenorrhea: a randomized controlled study. *BMC Complement Med Ther* 2022;22(1):19. doi:10.1186/s12906-022-03515-2, PMID:35065636.
- [102] Shah S, Rath H, Sharma G, Senapati SN, Mishra E. Effectiveness of curcumin mouthwash on radiation-induced oral mucositis among

- head and neck cancer patients: A triple-blind, pilot randomised controlled trial. *Indian J Dent Res* 2020;31(5):718–727. doi:10.4103/ijdr.IJDR_822_18, PMID:33433509.
- [103] Uchio R, Kawasaki K, Okuda-Hanafusa C, Saji R, Muroyama K, Muro-saki S, *et al*. Curcuma longa extract improves serum inflammatory markers and mental health in healthy participants who are over-weight: a randomized, double-blind, placebo-controlled trial. *Nutr J* 2021;20(1):91. doi:10.1186/s12937-021-00748-8, PMID:34774052.
- [104] Radunz CL, Okuyama CE, Branco-Barreiro FCA, Pereira RMS, Diniz SN. Clinical randomized trial study of hearing aids effectiveness in as-sociation with Ginkgo biloba extract (Egb 761) on tinnitus improve-ment. *Braz J Otorhinolaryngol* 2020;86(6):734–742. doi:10.1016/j.bjorl.2019.05.003, PMID:31300303.
- [105] Nazarinassab M, Behrouzian F, Negahban S, Sadegh AM, Zeynali E. Investigating the efficacy of Ginkgo biloba on the cognitive function of patients undergoing treatment with electric shock: a double-blind clinical trial. *J Med Life* 2022;15(12):1540–1547. doi:10.25122/jml-2021-0262, PMID:36762332.
- [106] Sha RN, Tang L, Du YW, Wu SX, Zou HX, *et al*. Effectiveness and safety of Ginkgo biloba extract (GBE50) in the treatment of diz-iness caused by cerebral arteriosclerosis: a multi-center, double-blind, randomized controlled trial. *J Tradit Chin Med* 2022;42(1):83–89. doi:10.19852/j.cnki.jtcm.20211214.001, PMID:35294126.
- [107] Pingali U, Nutalapati C, Koilagundla N, Taduri G. A randomized, dou-ble-blind, positive-controlled, prospective, dose-response clinical study to evaluate the efficacy and tolerability of an aqueous extract of Terminalia bellerica in lowering uric acid and creatinine levels in chronic kidney disease subjects with hyperuricemia. *BMC Com-plement Med Ther* 2020;20(1):281. doi:10.1186/s12906-020-03071-7, PMID:32933504.
- [108] Pingali U, Sukumaran D, Nutalapati C. Effect of an aqueous extract of Terminalia chebula on endothelial dysfunction, systemic inflam-mation, and lipid profile in type 2 diabetes mellitus: A randomized double-blind, placebo-controlled clinical study. *Phytother Res* 2020;34(12):3226–3235. doi:10.1002/ptr.6771, PMID:32618037.
- [109] Zadhoush R, Alavi-Naeini A, Feizi A, Naghshineh E, Ghazvini MR. The effect of garlic (*Allium sativum*) supplementation on the li-pid parameters and blood pressure levels in women with polycys-tic ovary syndrome: A randomized controlled trial. *Phytother Res* 2021;35(11):6335–6342. doi:10.1002/ptr.7282, PMID:34496450.
- [110] Alhashim M, Lombardo J. Effect of Topical Garlic on Wound Heal-ing and Scarring: A Clinical Trial. *Dermatol Surg* 2020;46(5):618–627. doi:10.1097/DSS.000000000000123, PMID:31490311.
- [111] Choudhary PR, Jani RD, Sharma MS. Effect of Raw Crushed Garlic (*Allium sativum* L.) on Components of Metabolic Syndrome. *J Diet Suppl* 2018;15(4):499–506. doi:10.1080/19390211.2017.1358233, PMID:28956671.
- [112] Xu C, Mathews AE, Rodrigues C, Eudy BJ, Rowe CA, O'Donoghue A, *et al*. Aged garlic extract supplementation modifies inflammation and immunity of adults with obesity: A randomized, double-blind, placebo-controlled clinical trial. *Clin Nutr ESPEN* 2018;24:148–155. doi:10.1016/j.clnesp.2017.11.010, PMID:29576354.
- [113] Ried K, Frank OR, Stocks NP. Aged garlic extract reduces blood pressure in hypertensives: a dose-response trial. *Eur J Clin Nutr* 2013;67(1):64–70. doi:10.1038/ejcn.2012.178, PMID:23169470.
- [114] Kim HG, Cho JH, Yoo SR, Lee JS, Han JM, Lee NH, *et al*. Antifatigue effects of Panax ginseng C.A. Meyer: a randomised, double-blind, placebo-controlled trial. *PLoS One* 2013;8(4):e61271. doi:10.1371/journal.pone.0061271, PMID:23613825.
- [115] Jovanovski E, Lea-Duvnjak-Smiric, Komishon A, Au-Yeung F, Zurbau A, Jenkins AL, *et al*. Vascular effects of combined enriched Korean Red ginseng (*Panax Ginseng*) and American ginseng (*Panax Quinque-folius*) administration in individuals with hypertension and type 2 diabetes: A randomized controlled trial. *Complement Ther Med* 2020;49:102338. doi:10.1016/j.ctim.2020.102338, PMID:32147072.
- [116] Lin CH, Lin YA, Chen SL, Hsu MC, Hsu CC. American Ginseng Attenu-ates Eccentric Exercise-Induced Muscle Damage via the Modulation of Lipid Peroxidation and Inflammatory Adaptation in Males. *Nutri-ents* 2021;14(1):78. doi:10.3390/nu14010078, PMID:35010953.
- [117] Ghorbani Z, Mirghafourvand M, Farshbaf Khalili A, Javadzadeh Y, Shakouri SK, Dastranj Tabrizi A. The Effect of Panax ginseng on Geni-tourinary Syndrome in Postmenopausal Women: A Randomized, Double-Blind, Placebo-Controlled Clinical Trial. *Complement Med Res* 2021;28(5):419–426. doi:10.1159/000514944, PMID:33730722.
- [118] Jung JH, Kang TK, Oh JH, Jeong JU, Ko KP, Kim ST. The Effect of Ko-rean Red Ginseng on Symptoms and Inflammation in Patients With Allergic Rhinitis. *Ear Nose Throat J* 2021;100(suppl 5):712S–719S. doi:10.1177/0145561320907172, PMID:32070136.
- [119] Guiné RP, Gonçalves FJ. Bioactive Compounds in Some Culinary Aro-matic Herbs and Their Effects on Human Health. *Mini Rev Med Chem* 2016;16(11):855–866. doi:10.2174/1389557516666160211120540, PMID:26864553.
- [120] Stéphane FF, Jules BK, Batiha GE, Ali I, Bruno LN. El-Shemy HA. Ex-traction of bioactive compounds from medicinal plants and herbs. *Natural Medicinal Plants* 2021;RijekaIntechOpen1–39. doi:10.5772/intechopen.98602.
- [121] Yan Y, Liu N, Hou N, Dong L, Li J. Chlorogenic acid inhibits hepatocel-lular carcinoma in vitro and in vivo. *J Nutr Biochem* 2017;46:68–73. doi:10.1016/j.jnutbio.2017.04.007, PMID:28458139.
- [122] Sultana S, Munir N, Mahmood Z, Riaz M, Akram M, Rebezov M, *et al*. Molecular targets for the management of cancer using Curcuma longa Linn. phytoconstituents: A Review. *Biomed Pharmacother* 2021;135:111078. doi:10.1016/j.biopha.2020.111078, PMID:33433356.
- [123] Zhang F, Thakur K, Hu F, Zhang JG, Wei ZJ. 10-Gingerol, a Phyto-chemical Derivative from “Tongling White Ginger”, Inhibits Cervical Cancer: Insights into the Molecular Mechanism and Inhibitory Tar-gets. *J Agric Food Chem* 2017;65(10):2089–2099. doi:10.1021/acs.jafc.7b00095, PMID:28230361.
- [124] Pal HC, Sharma S, Strickland LR, Agarwal J, Athar M, Elmets CA, *et al*. Delphinidin reduces cell proliferation and induces apoptosis of non-small-cell lung cancer cells by targeting EGFR/VEGFR2 signal-ing pathways. *PLoS One* 2013;8(10):e77270. doi:10.1371/journal.pone.0077270, PMID:24124611.
- [125] Wang X, Zhang ZF, Zheng GH, Wang AM, Sun CH, Qin SP, *et al*. The Inhibitory Effects of Purple Sweet Potato Color on Hepatic Inflam-mation Is Associated with Restoration of NAD⁺ Levels and Attenu-ation of NLRP3 Inflammasome Activation in High-Fat-Diet-Treated Mice. *Molecules* 2017;22(8):1315. doi:10.3390/molecules22081315, PMID:28786950.
- [126] Zapf MA, Kothari AN, Weber CE, Arffa ML, Wai PY, Driver J, *et al*. Green tea component epigallocatechin-3-gallate decreases expres-sion of osteopontin via a decrease in mRNA half-life in cell lines of metastatic hepatocellular carcinoma. *Surgery* 2015;158(4):1039–1047. doi:10.1016/j.surg.2015.06.011, PMID:26189955.
- [127] Sur S, Pal D, Roy R, Barua A, Roy A, Saha P, *et al*. Tea polyphenols ECGG and TF restrict tongue and liver carcinogenesis simultaneously induced by N-nitrosodiethylamine in mice. *Toxicol Appl Pharmacol* 2016;300:34–46. doi:10.1016/j.taap.2016.03.016, PMID:27058323.
- [128] Shimizu M, Shirakami Y, Sakai H, Tatebe H, Nakagawa T, Hara Y, *et al*. ECGG inhibits activation of the insulin-like growth factor (IGF)/IGF-1 receptor axis in human hepatocellular carcinoma cells. *Cancer Lett* 2008;262(1):10–18. doi:10.1016/j.canlet.2007.11.026, PMID:18164805.
- [129] Banjerdpongchai R, Wudtiwai B, Khaw-On P, Rachakhom W, Duang-nil N, Kongtawelert P. Hesperidin from Citrus seed induces human hepatocellular carcinoma HepG2 cell apoptosis via both mitochon-drial and death receptor pathways. *Tumour Biol* 2016;37(1):227–237. doi:10.1007/s13277-015-3774-7, PMID:26194866.
- [130] Zhang J, Song J, Wu D, Wang J, Dong W. Hesperetin induces the apo-ptosis of hepatocellular carcinoma cells via mitochondrial pathway mediated by the increased intracellular reactive oxygen species, ATP and calcium. *Med Oncol* 2015;32(4):101. doi:10.1007/s12032-015-0516-z, PMID:25737432.
- [131] Yen HR, Liu CJ, Yeh CC. Naringenin suppresses TPA-induced tumor invasion by suppressing multiple signal transduction pathways in hu-man hepatocellular carcinoma cells. *Chem Biol Interact* 2015;235:1–9. doi:10.1016/j.cbi.2015.04.003, PMID:25866363.
- [132] Akram M, Riaz M, Wadood AWC, Hazrat A, Mukhtiar M, Ahmad Zak-ki S, *et al*. Medicinal plants with anti-mutagenic potential. *Biotechnol Biotechnol Equip* 34(1):309–318. doi:10.1080/13102818.2020.1749527.

- [133] García ER, Gutierrez EA, de Melo FCSA, Novaes RD, Gonçalves RV. Flavonoids Effects on Hepatocellular Carcinoma in Murine Models: A Systematic Review. *Evid Based Complement Alternat Med* 2018;2018:6328970. doi:10.1155/2018/6328970, PMID:29681978.
- [134] Iyer SC, Gopal A, Halagowder D. Myricetin induces apoptosis by inhibiting P21 activated kinase 1 (PAK1) signaling cascade in hepatocellular carcinoma. *Mol Cell Biochem* 2015;407(1-2):223–237. doi:10.1007/s11010-015-2471-6, PMID:26104578.
- [135] Kim SJ, Jeong CW, Bae HB, Kwak SH, Son JK, Seo CS, *et al*. Protective effect of sauchinone against regional myocardial ischemia/reperfusion injury: inhibition of p38 MAPK and JNK death signaling pathways. *J Korean Med Sci* 2012;27(5):572–575. doi:10.3346/jkms.2012.27.5.572, PMID:22563228.
- [136] Zuo YH, Liu YB, Cheng CS, Yang YP, Xie Y, Luo P, *et al*. Isovalerylbinakdsurin A ameliorates cardiac ischemia/reperfusion injury through activating GR dependent RISK signaling. *Pharmacol Res* 2020;158:104897. doi:10.1016/j.phrs.2020.104897, PMID:32422343.
- [137] Zhang H, Sun Q, Xu T, Hong L, Fu R, Wu J, *et al*. Resveratrol attenuates the progress of liver fibrosis via the Akt/nuclear factor-κB pathways. *Mol Med Rep* 2016;13(1):224–230. doi:10.3892/mmr.2015.4497, PMID:26530037.
- [138] Li J, Liu P, Zhang R, Cao L, Qian H, Liao J, *et al*. Icaritin induces cell death in activated hepatic stellate cells through mitochondrial activated apoptosis and ameliorates the development of liver fibrosis in rats. *J Ethnopharmacol* 2011;137(1):714–723. doi:10.1016/j.jep.2011.06.030, PMID:21726622.
- [139] Ling Y, Chen G, Deng Y, Tang H, Ling L, Zhou X, *et al*. Polydatin post-treatment alleviates myocardial ischaemia/reperfusion injury by promoting autophagic flux. *Clin Sci (Lond)* 2016;130(18):1641–1653. doi:10.1042/CS20160082, PMID:27340138.
- [140] Mioc M, Milan A, Malița D, Mioc A, Prodea A, Racoviceanu R, *et al*. Recent Advances Regarding the Molecular Mechanisms of Triterpenic Acids: A Review (Part I). *Int J Mol Sci* 2022;23(14):7740. doi:10.3390/ijms23147740, PMID:35887090.
- [141] Yi C, Song M, Sun L, Si L, Yu D, Li B, *et al*. Asiatic Acid Alleviates Myocardial Ischemia-Reperfusion Injury by Inhibiting the ROS-Mediated Mitochondria-Dependent Apoptosis Pathway. *Oxid Med Cell Longev* 2022;2022:3267450. doi:10.1155/2022/3267450, PMID:35198095.
- [142] Wang F, Gao Q, Yang J, Wang C, Cao J, Sun J, *et al*. Artemisinin suppresses myocardial ischemia-reperfusion injury via NLRP3 inflammasome mechanism. *Mol Cell Biochem* 2020;474(1-2):171–180. doi:10.1007/s11010-020-03842-3, PMID:32729005.
- [143] Chang L, Shi R, Wang X, Bao Y. Gypenoside A protects ischemia/reperfusion injuries by suppressing miR-143-3p level via the activation of AMPK/Foxo1 pathway. *Biofactors* 2020;46(3):432–440. doi:10.1002/biof.1601, PMID:31889343.
- [144] Wang Y, Che J, Zhao H, Tang J, Shi G. Platycodin D inhibits oxidative stress and apoptosis in H9c2 cardiomyocytes following hypoxia/reoxygenation injury. *Biochem Biophys Res Commun* 2018;503(4):3219–3224. doi:10.1016/j.bbrc.2018.08.129, PMID:30146261.
- [145] Omata M, Matsui N, Inomata N, Ohno T. Protective effects of polysaccharide fucoidin on myocardial ischemia-reperfusion injury in rats. *J Cardiovasc Pharmacol* 1997;30(6):717–724. doi:10.1097/00005344-199712000-00003, PMID:9436808.
- [146] Przybylska S, Tokarczyk G. Lycopene in the Prevention of Cardiovascular Diseases. *Int J Mol Sci* 2022;23(4):1957. doi:10.3390/ijms23041957, PMID:35216071.
- [147] Wang XY, Dong WP, Bi SH, Pan ZG, Yu H, Wang XW, *et al*. Protective effects of osthole against myocardial ischemia/reperfusion injury in rats. *Int J Mol Med* 2013;32(2):365–372. doi:10.3892/ijmm.2013.1386, PMID:23695269.